

The Great Grid Upgrade

Sea Link

Sea Link

Volume 9: Examination Submissions

Document 9.76.5.9: Change Request Appendix I Tree Protection Plans Suffolk Onshore Scheme

Planning Inspectorate Reference: EN020026

Version: B
March 2026

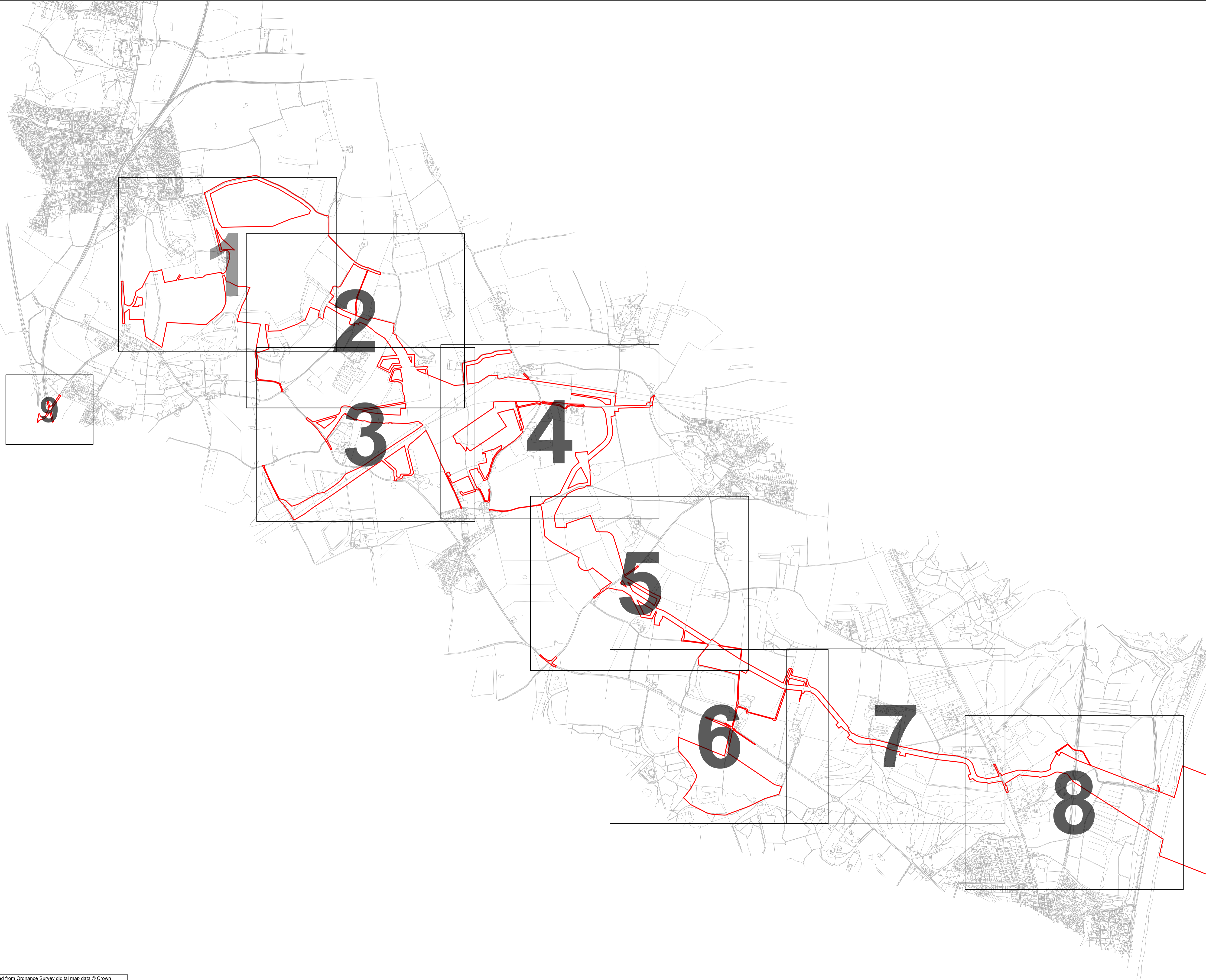
Page intentionally blank

Contents

Tree Protection Plan Suffolk Site (Sheet 00)
Tree Protection Plan Suffolk Site (Sheet 01)
Tree Protection Plan Suffolk Site (Sheet 02)
Tree Protection Plan Suffolk Site (Sheet 03)
Tree Protection Plan Suffolk Site (Sheet 04)
Tree Protection Plan Suffolk Site (Sheet 05)
Tree Protection Plan Suffolk Site (Sheet 06)
Tree Protection Plan Suffolk Site (Sheet 07)
Tree Protection Plan Suffolk Site (Sheet 08)
Tree Protection Plan Suffolk Site (Sheet 09)

Version History

Date	Version	Status	Description / Changes
November 2025	A	Final	For Change Request Submission
March 2026	B	Final	Updated in response to SCC comments, for Deadline 5



AECOM

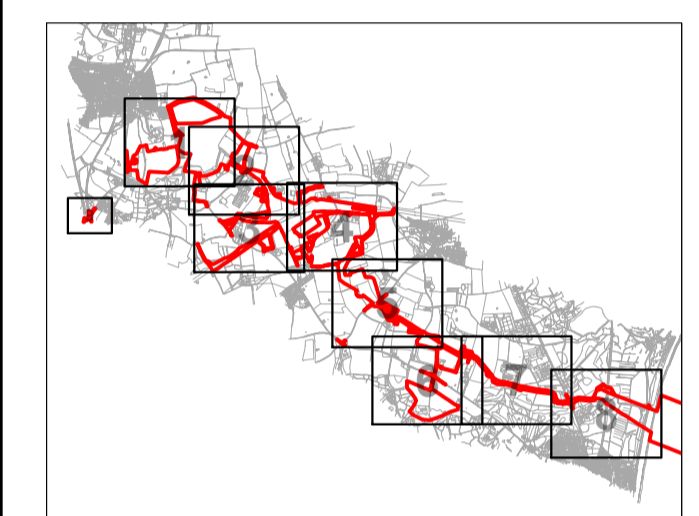
PROJECT
 Sea Link (Suffolk)

CLIENT
 National Grid

CONSULTANT
 AECOM
 Mid Point, Alencon Link,
 Basingstoke, Hants,
 RG21 7PP
 Tel +44 (0) 1256 310 200
 www.aecom.com

GENERAL NOTES

- TREE CATEGORIES AS DEFINED BY BS 5837:2012
- TREE LOCATIONS ARE BASED ON THE OS MAPPING, AERIAL IMAGERY, AND GPS CO-ORDINATES FROM ON SITE WALKOVER.
- * INDICATES A TREE / GROUP WHOSE POSITION IS APPROXIMATE AS BASED UPON AERIAL PHOTOGRAPHY AND ON SITE OBSERVATIONS.
- PLANS SHOULD BE READ IN CONJUNCTION WITH THE AECOM ARBORICULTURAL REPORT.
- THE ORIGINAL OF THIS DRAWING WAS PRODUCED IN COLOUR - A MONOCHROME COPY SHOULD NOT BE RELIED UPON.
- DRAWING REFERENCES:
 LPA Searches.dwg
 OSMA Lines.dwg
 Visibility Studies for Vegetation Clearance.dwg
 D4 Fromus Crossing Options.dwg
 SEAL MMD-SEAL-ENG-M2-0095.dwg
 Rev C_Draft_Order Limits.dwg
 D4_Suffolk_Rev C_20251110.dwg



KEY

- ORDER LIMITS
- EXISTING TREE, GROUP, WOODLAND, OR HEDGE TO BE RETAINED
- EXISTING TREE, GROUP, WOODLAND, OR HEDGE TO BE REMOVED
- ROOT PROTECTION AREA OF RETAINED TREES (AS DEFINED BY BS 5837:2012)
- VETERAN TREE MARKER (INDICATES POSITION OF TREE OF VETERAN STATUS)
- ANCIENT TREE MARKER (INDICATES POSITION OF TREE OF ANCIENT STATUS)
- TREE PROTECTION FENCING
- CONSTRUCTION EXCLUSION ZONE (FENCING OF PLANT MATERIALS STORAGE, SIGNIFICATION AND ALL OTHER CONSTRUCTION ACTIVITIES ARE EXCLUDED WITHIN THESE AREAS FOR THE PURPOSES OF PROTECTING TREE HEALTH)
- CONSTRUCTION WORKING ZONE (MANAGED CONSTRUCTION PROCESSES PERMITTED IN ACCORDANCE WITH THE PRINCIPLES SET OUT WITHIN THE ARBORICULTURAL IMPACT ASSESSMENT)
- ANCIENT WOODLAND (W15m BUFFER ZONE) (AREA CLASSIFIED AS AN ANCIENT WOODLAND)
- PRIORITY HABITAT (CONDENSED AN AREA OF PRIORITY HABITAT)
- SSSI AREA (AREA CONTAINING SITE OF SPECIAL SCIENTIFIC INTEREST)
- NATURE RESERVE (AREA CLASSIFIED AS A LOCAL OR NATIONAL NATURE RESERVE)
- TREE PRESERVATION ORDER (AREA COVERED BY A TREE PRESERVATION ORDER (TPO))

ISSUE/REVISION

IR	DATE	DESCRIPTION
A V3	13.02.26	REVISION A (VERSION 3 CHANGE REQUEST)
A V2	14.11.25	REVISION A (VERSION 2 CHANGE REQUEST)
P03	08.01.25	FEATURE AMENDS
P02	19.12.24	SECOND ISSUE
P01	22.11.24	FIRST ISSUE

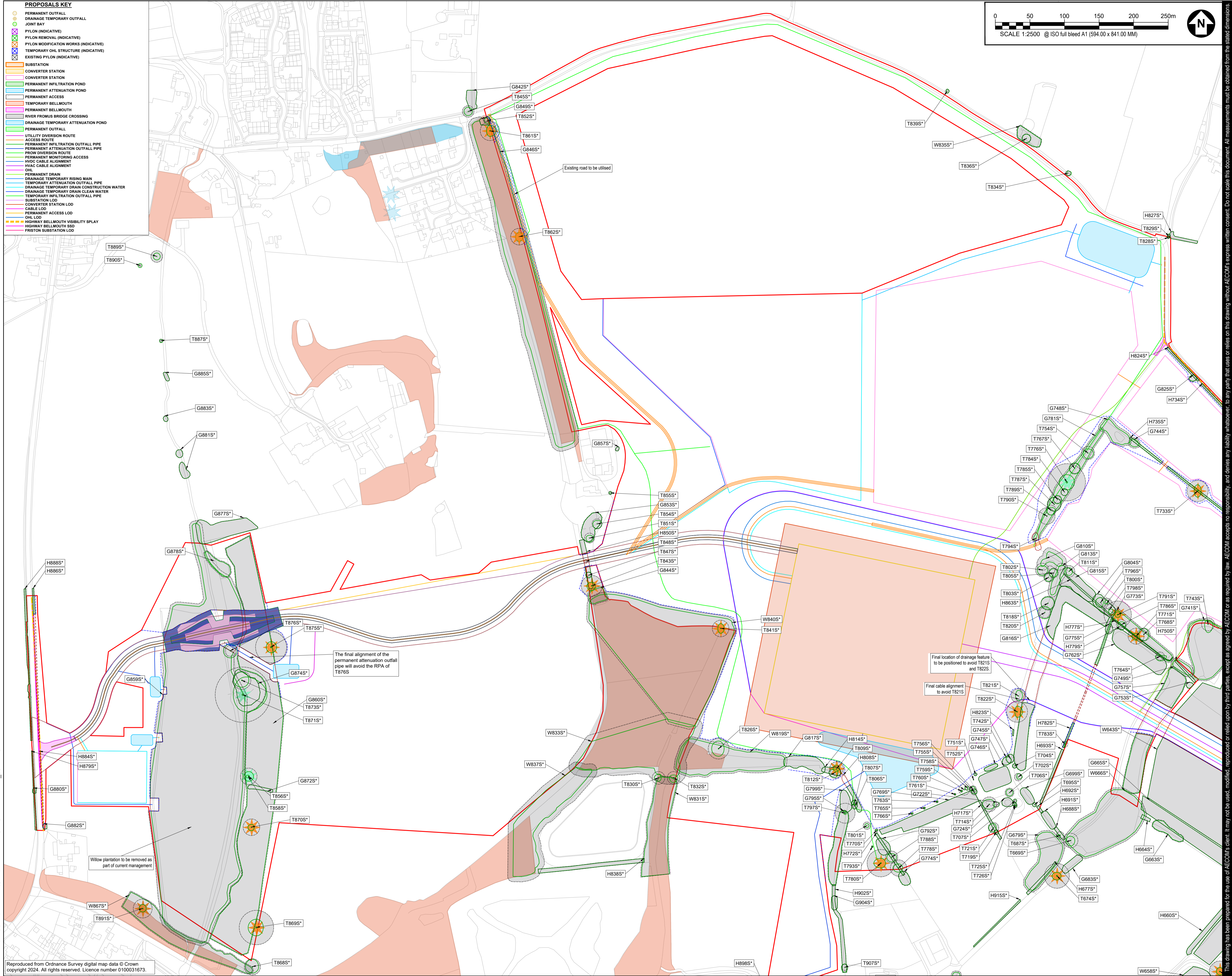
DRAWING STATUS
 ISSUE

PROJECT NUMBER
 60664038

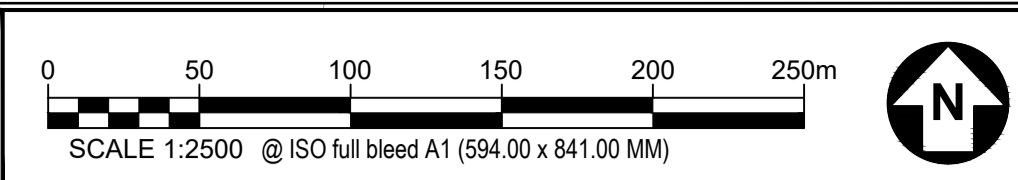
SHEET TITLE
 TREE PROTECTION PLAN
 SUFFOLK SITE
 (SHEET 00)

SHEET NUMBER **REV.**
 60664038-ACM-XX-SK-AB-TPP-000 A VER 3

This drawing has been prepared for the use of AECOM's client. It may not be used, modified, reproduced or relied upon by third parties, except as agreed by AECOM or as required by law. AECOM accepts no responsibility, and denies any liability whatsoever, to any party that uses or relies on this drawing without AECOM's express written consent. Do not scale this document. All measurements must be obtained from the stated dimensions.



- PROPOSALS KEY**
- PERMANENT OUTFALL
 - DRAINAGE TEMPORARY OUTFALL
 - JOINT BAY
 - PYLON (INDICATIVE)
 - PYLON REMOVAL (INDICATIVE)
 - PYLON MODIFICATION WORKS (INDICATIVE)
 - TEMPORARY OHL STRUCTURE (INDICATIVE)
 - EXISTING PYLON (INDICATIVE)
 - SUBSTATION
 - CONVERTER STATION
 - CONVERTER STATION
 - PERMANENT INFILTRATION POND
 - PERMANENT ATTENUATION POND
 - PERMANENT ACCESS
 - TEMPORARY BELLMOUTH
 - PERMANENT BELLMOUTH
 - RIVER FROMUS BRIDGE CROSSING
 - DRAINAGE TEMPORARY ATTENUATION POND
 - PERMANENT OUTFALL
 - UTILITY DIVERSION ROUTE
 - ACCESS ROUTE
 - PERMANENT INFILTRATION OUTFALL PIPE
 - PERMANENT ATTENUATION OUTFALL PIPE
 - PROW DIVERSION ROUTE
 - PERMANENT MONITORING ACCESS
 - HVDC CABLE ALIGNMENT
 - HVDC CABLE ALIGNMENT
 - PERMANENT DRAIN
 - DRAINAGE TEMPORARY RISING MAIN
 - TEMPORARY ATTENUATION OUTFALL PIPE
 - DRAINAGE TEMPORARY DRAIN CONSTRUCTION WATER
 - DRAINAGE TEMPORARY DRAIN CLEAN WATER
 - TEMPORARY INFILTRATION OUTFALL PIPE
 - SUBSTATION LOD
 - CONVERTER STATION LOD
 - CABLE LOD
 - PERMANENT ACCESS LOD
 - OHL LOD
 - HIGHWAY BELLMOUTH VISIBILITY SPLAY
 - HIGHWAY BELLMOUTH SSD
 - FRICTION SUBSTATION LOD

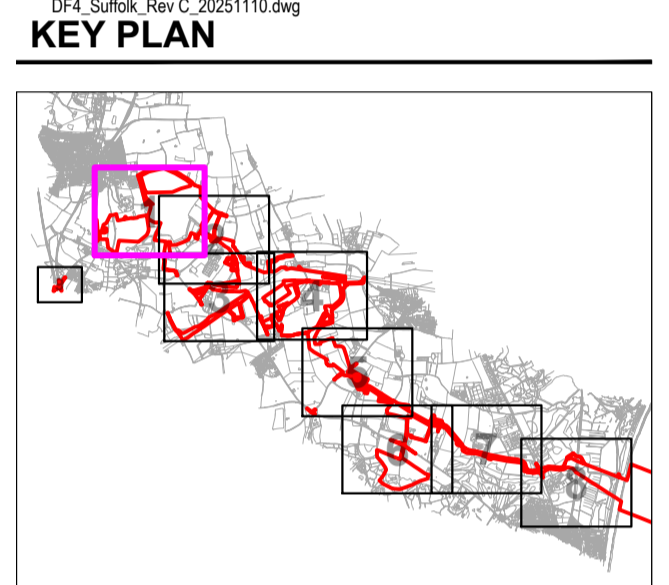


PROJECT
Sea Link (Suffolk)

CLIENT
National Grid

CONSULTANT
AECOM
Mid Point, Alencon Link,
Basingstoke, Hants,
RG21 7PP
Tel +44 (0) 1256 310 200
www.aecom.com

- GENERAL NOTES**
1. TREE CATEGORIES AS DEFINED BY BS 5837:2012
 2. TREE LOCATIONS ARE BASED ON THE OS MAPPING, AERIAL IMAGERY, AND GPS CO-ORDINATES FROM ON SITE WALKOVER.
 3. * INDICATES A TREE / GROUP WHOSE POSITION IS APPROXIMATE AS BASED UPON AERIAL PHOTOGRAPHY AND ON SITE OBSERVATIONS.
 4. PLANS SHOULD BE READ IN CONJUNCTION WITH THE AECOM ARBORICULTURAL REPORT.
 5. THE ORIGINAL OF THIS DRAWING WAS PRODUCED IN COLOUR - A MONOCHROME COPY SHOULD NOT BE RELIED UPON.
 6. DRAWING REFERENCES:
LPA Searches.dwg
OSMMA_Lines.dwg
Visibility Studies for Vegetation Clearance.dwg
D4 Fromus Crossing Options.dwg
SEAL_MMD-SEAL-ENG-M2-0095.dwg
Rev.C_Draft_Order_Limits.dwg
D4_Suffolk_Rev.C_20251110.dwg



- KEY**
- ORDER LIMITS
 - EXISTING TREE, GROUP, WOODLAND, OR HEDGE TO BE RETAINED
 - EXISTING TREE, GROUP, WOODLAND, OR HEDGE TO BE REMOVED
 - ROOT PROTECTION AREA OF RETAINED TREES (AS DEFINED BY BS 5837:2012)
 - VETERAN TREE MARKER (INDICATES POSITION OF TREE OF VETERAN STATUS)
 - ANCIENT TREE MARKER (INDICATES POSITION OF TREE OF ANCIENT STATUS)
 - TREE PROTECTION FENCING
 - CONSTRUCTION EXCLUSION ZONE (TRACING OF PLANT MATERIALS STORAGE, EXCAVATION AND ALL OTHER CONSTRUCTION ACTIVITIES ARE EXCLUDED WITHIN THESE AREAS FOR THE PURPOSES OF PROTECTING TREE HEALTH)
 - CONSTRUCTION WORKING ZONE (MANAGED CONSTRUCTION PROCESSES PERMITTED IN ACCORDANCE WITH THE PRINCIPLES SET OUT WITHIN THE ARBORICULTURAL IMPACT ASSESSMENT)
 - ANCIENT WOODLAND (W15m BUFFER ZONE) (AREA CLASSIFIED AS AN ANCIENT WOODLAND)
 - PRIORITY HABITAT (AREA CLASSIFIED AS PRIORITY HABITAT)
 - SSSI AREA (AREA CONTAINING SITE OF SPECIAL SCIENTIFIC INTEREST)
 - NATURE RESERVE (AREA CLASSIFIED AS A LOCAL OR NATIONAL NATURE RESERVE)
 - TREE PRESERVATION ORDER (AREA COVERED BY A TREE PRESERVATION ORDER (TPO))

ISSUE/REVISION

REV	DATE	DESCRIPTION
A V3	13.02.26	REVISION A (VERSION 3 CHANGE REQUEST)
A V2	14.11.25	REVISION A (VERSION 2 CHANGE REQUEST)
P03	08.01.25	FEATURE AMENDS
P02	19.12.24	SECOND ISSUE
P01	22.11.24	FIRST ISSUE
IR		DATE DESCRIPTION

DRAWING STATUS
ISSUE

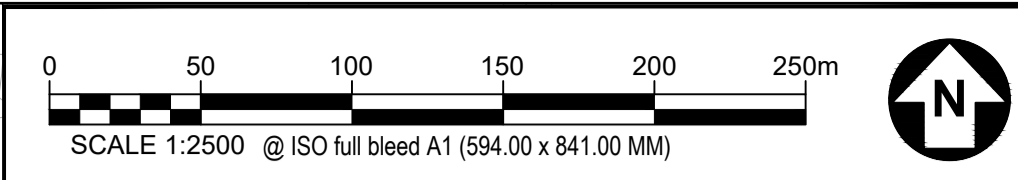
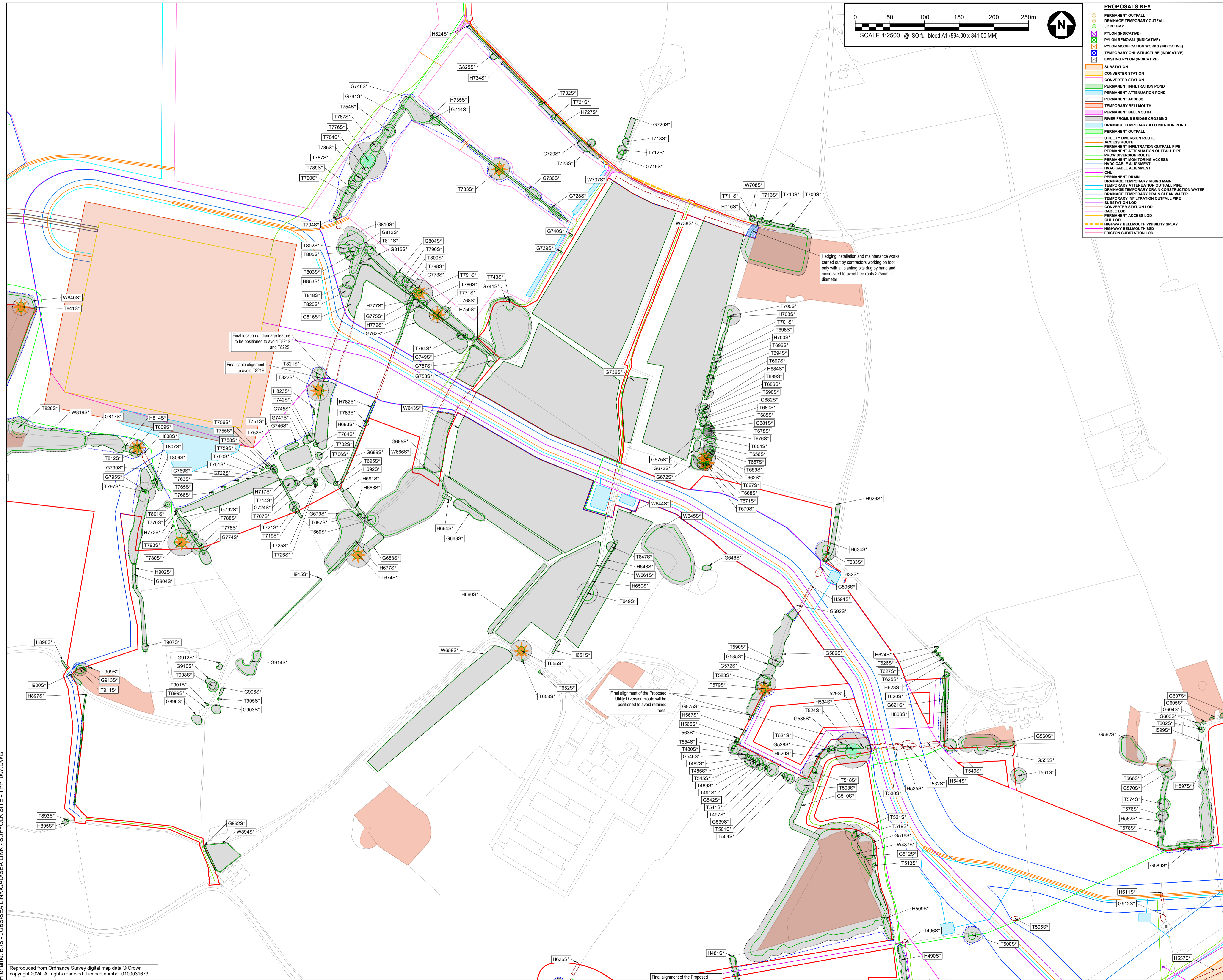
PROJECT NUMBER
60664038

SHEET TITLE
TREE PROTECTION PLAN
SUFFOLK SITE
(SHEET 01)

SHEET NUMBER **REV.**
60664038-ACM-XX-SK-AB-TPP-001 A VER 3

Reproduced from Ordnance Survey digital map data © Crown copyright 2024. All rights reserved. Licence number 0100031673.

This drawing has been prepared for the use of AECOM's Client. It may not be used, modified, reproduced or relied upon by third parties, except as agreed by AECOM or as required by law. AECOM accepts no responsibility, and denies any liability whatsoever, to any party that uses or relies on this drawing without AECOM's express written consent. Do not scale this document. All measurements must be obtained from the stated dimensions.



- PROPOSALS KEY**
- PERMANENT OUTFALL
 - DRAINAGE TEMPORARY OUTFALL
 - JOINT BAY
 - PYLON (INDICATIVE)
 - PYLON REMOVAL (INDICATIVE)
 - PYLON MODIFICATION WORKS (INDICATIVE)
 - TEMPORARY OHL STRUCTURE (INDICATIVE)
 - EXISTING PYLON (INDICATIVE)
 - SUBSTATION
 - CONVERTER STATION
 - CONVERTER STATION
 - PERMANENT INFILTRATION POND
 - PERMANENT ATTENUATION POND
 - PERMANENT ACCESS
 - TEMPORARY BELLMOUTH
 - PERMANENT BELLMOUTH
 - RIVER FROMUS BRIDGE CROSSING
 - DRAINAGE TEMPORARY ATTENUATION POND
 - PERMANENT OUTFALL
 - UTILITY DIVERSION ROUTE
 - ACCESS ROUTE
 - PERMANENT INFILTRATION OUTFALL PIPE
 - PERMANENT ATTENUATION OUTFALL PIPE
 - PROV DIVERSION ROUTE
 - PERMANENT MONITORING ACCESS
 - HVDC CABLE ALIGNMENT
 - HVAC CABLE ALIGNMENT
 - OHL
 - PERMANENT DRAIN
 - DRAINAGE TEMPORARY RISING MAIN
 - TEMPORARY INFILTRATION OUTFALL PIPE
 - DRAINAGE TEMPORARY DRAIN CONSTRUCTION WATER
 - DRAINAGE TEMPORARY INFILTRATION OUTFALL PIPE
 - TEMPORARY INFILTRATION OUTFALL PIPE
 - CONVERTER STATION LOD
 - CONVERTER STATION LOD
 - PERMANENT ACCESS LOD
 - OHL LOD
 - HIGHWAY BELLMOUTH VISIBILITY SPLAY
 - HIGHWAY BELLMOUTH SSD
 - FRISTON SUBSTATION LOD

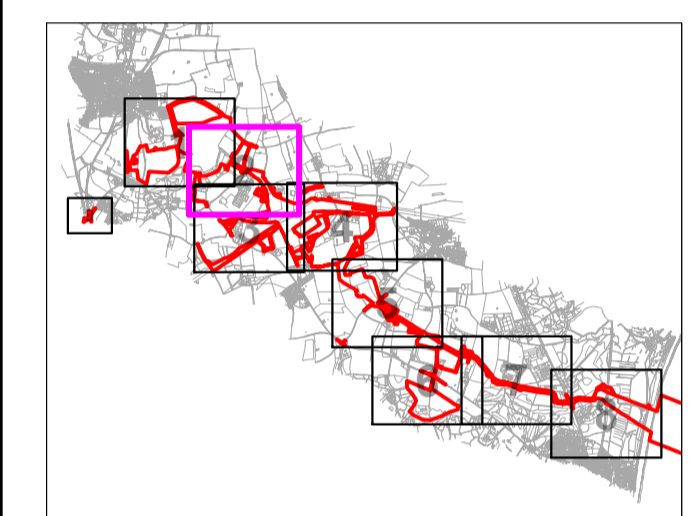
AECOM

PROJECT
Sea Link (Suffolk)

CLIENT
National Grid

CONSULTANT
AECOM
Mid Point, Alencon Link,
Basingstoke, Hants,
RG21 7PP
Tel +44 (0) 1256 310 200
www.aecom.com

- GENERAL NOTES**
1. TREE CATEGORIES AS DEFINED BY BS 5837:2012
 2. TREE LOCATIONS ARE BASED ON THE OS MAPPING, AERIAL IMAGERY, AND GPS CO-ORDINATES FROM ON SITE WALKOVER.
 3. * INDICATES A TREE / GROUP WHOSE POSITION IS APPROXIMATE AS BASED UPON AERIAL PHOTOGRAPHY AND ON SITE OBSERVATIONS.
 4. PLANS SHOULD BE READ IN CONJUNCTION WITH THE AECOM ARBORICULTURAL REPORT.
 5. THE ORIGINAL OF THIS DRAWING WAS PRODUCED IN COLOUR - A MONOCHROME COPY SHOULD NOT BE RELIED UPON.
 6. DRAWING REFERENCES:
LPA Searches.dwg
OSMMA_Lines.dwg
Visibility Splays for Vegetation Clearance.dwg
D4 Fromus Crossing Options.dwg
SEA_LMD-SEA-ENG-M2-0095.dwg
Rev.C_Draft_Order_Limits.dwg
D4_Suffolk_Rev.C_20251110.dwg



- KEY**
- ORDER LIMITS
 - EXISTING TREE, GROUP, WOODLAND, OR HEDGE TO BE RETAINED
 - EXISTING TREE, GROUP, WOODLAND, OR HEDGE TO BE REMOVED
 - ROOT PROTECTION AREA OF RETAINED TREES (AS DEFINED BY BS 5837:2012)
 - VETERAN TREE MARKER (INDICATES POSITION OF TREE OF VETERAN STATUS)
 - ANCIENT TREE MARKER (INDICATES POSITION OF TREE OF ANCIENT STATUS)
 - TREE PROTECTION FENCING
 - CONSTRUCTION EXCLUSION ZONE (FRONTAGE OF PLANT MATERIALS STORAGE, EXCAVATION AND ALL OTHER CONSTRUCTION ACTIVITIES ARE EXCLUDED WITHIN THESE AREAS FOR THE PURPOSES OF PROTECTING TREE HEALTH)
 - CONSTRUCTION WORKING ZONE (MANAGED CONSTRUCTION PROCESSES PERMITTED IN ACCORDANCE WITH THE PRINCIPLES SET OUT WITHIN THE ARBORICULTURAL IMPACT ASSESSMENT)
 - ANCIENT WOODLAND (W15m BUFFER ZONE) (AREA CLASSIFIED AS AN ANCIENT WOODLAND)
 - PRIORITY HABITAT (CONSIDERED AN AREA OF PRIORITY HABITAT)
 - SSSI AREA (AREA CONTAINING SITE OF SPECIAL SCIENTIFIC INTEREST)
 - NATURE RESERVE (AREA CLASSIFIED AS A LOCAL OR NATIONAL NATURE RESERVE)
 - TREE PRESERVATION ORDER (AREA COVERED BY A TREE PRESERVATION ORDER (TPO))

ISSUE/REVISION

REV	DATE	DESCRIPTION
A V3	13.02.26	REVISION A (VERSION 3 CHANGE REQUEST)
A V2	14.11.25	REVISION A (VERSION 2 CHANGE REQUEST)
P03	08.01.25	FEATURE AMENDS
P02	19.12.24	SECOND ISSUE
P01	22.11.24	FIRST ISSUE
IR		DATE DESCRIPTION

DRAWING STATUS
ISSUE

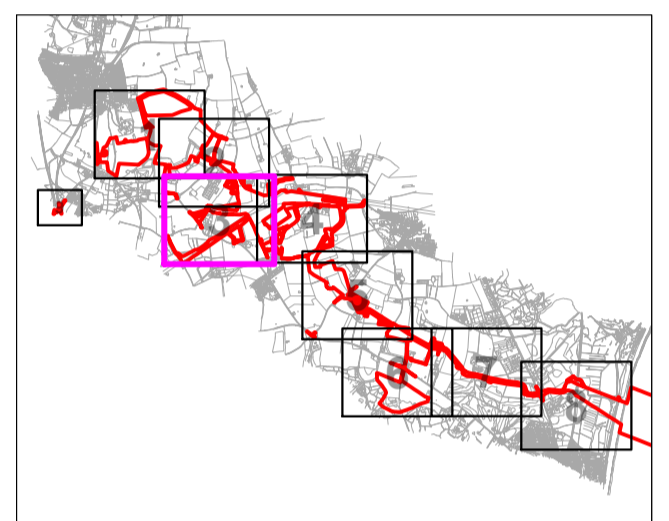
PROJECT NUMBER
60664038

SHEET TITLE
TREE PROTECTION PLAN
SUFFOLK SITE
(SHEET 02)

SHEET NUMBER **REV.**
60664038-ACM-XX-SK-AB-TTP-002 A VER 3

This drawing has been prepared for the use of AECOM's client. It may not be used, modified, reproduced or relied upon by third parties, except as agreed by AECOM or as required by law. AECOM accepts no responsibility, and denies any liability whatsoever, to any party that uses or relies on this drawing without AECOM's express written consent. Do not scale this document. All measurements must be obtained from the stated dimensions.

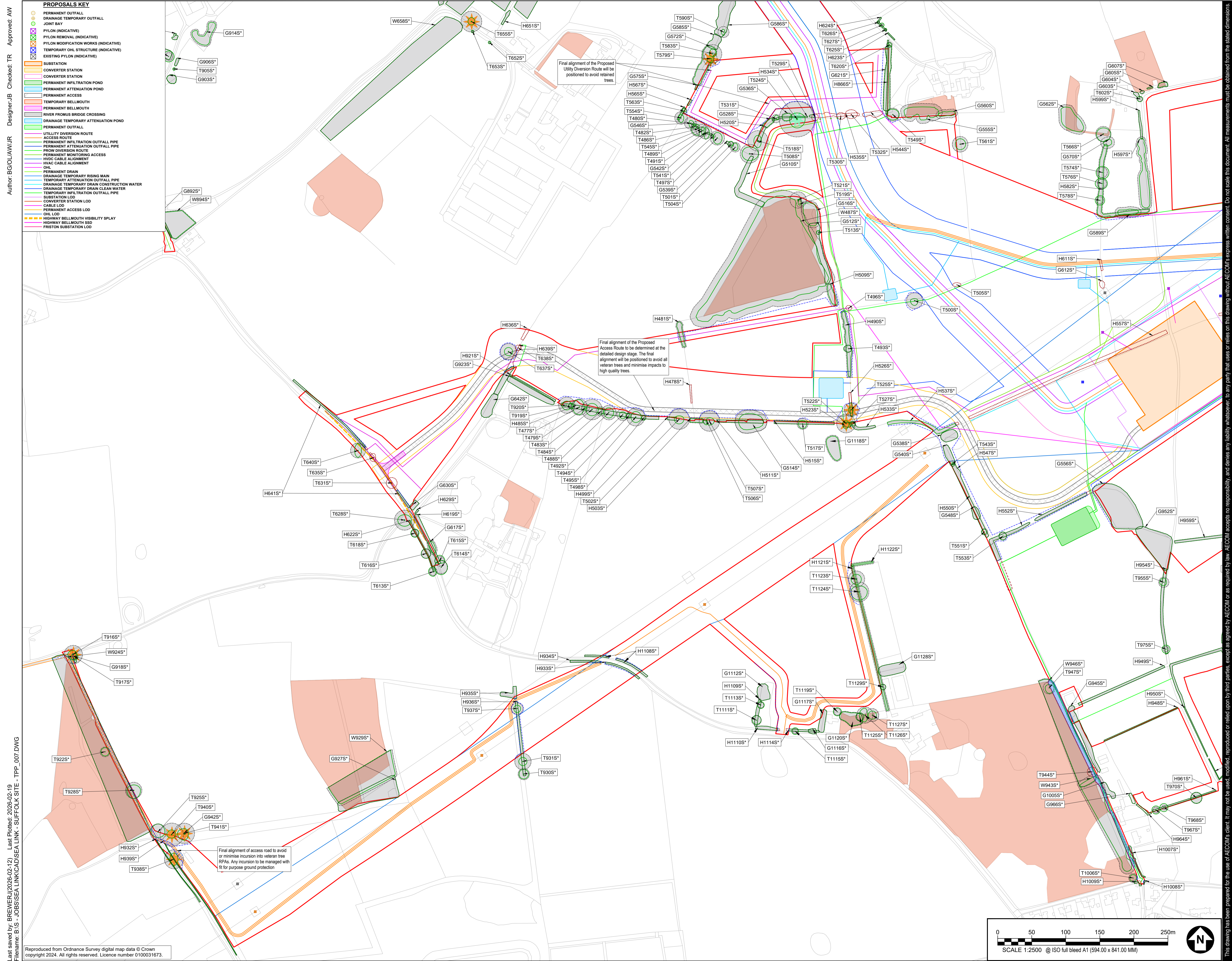
1. TREE CATEGORIES AS DEFINED BY BS 5837:2012
2. TREE LOCATIONS ARE BASED ON THE OS MAPPING, AERIAL IMAGERY, AND GPS CO-ORDINATES FROM ON SITE WALKOVER.
3. * INDICATES A TREE / GROUP WHOSE POSITION IS APPROXIMATE AS BASED UPON AERIAL PHOTOGRAPHY AND ON SITE OBSERVATIONS.
4. PLANS SHOULD BE READ IN CONJUNCTION WITH THE AECOM ARBORICULTURAL REPORT.
5. THE ORIGINAL OF THIS DRAWING WAS PRODUCED IN COLOUR - A MONOCHROME COPY SHOULD NOT BE RELIED UPON.
6. DRAWING REFERENCES:
LPA Searches.dwg
OSMA Lines.dwg
Visibility Studies for Vegetation Clearance.dwg
D4 Fromus Crossing Options.dwg
SEAL MMD-SEAL-ENG-M2-0095.dwg
Rev.C_Draft_Order_Limits.dwg
D4_Suffolk_Rev.C_20251110.dwg



- ORDER LIMITS**
- EXISTING TREE, GROUP, WOODLAND, OR HEDGE TO BE RETAINED**
- EXISTING TREE, GROUP, WOODLAND, OR HEDGE TO BE REMOVED**
- ROOT PROTECTION AREA OF RETAINED TREES** (AS DEFINED BY BS 5837:2012)
- VETERAN TREE MARKER** (INDICATES POSITION OF TREE OF VETERAN STATUS)
- ANCIENT TREE MARKER** (INDICATES POSITION OF TREE OF ANCIENT STATUS)
- TREE PROTECTION FENCING**
- CONSTRUCTION EXCLUSION ZONE** (FENCING OF PLANT MATERIALS STORAGE, EXCAVATION AND ALL OTHER CONSTRUCTION ACTIVITIES ARE EXCLUDED WITHIN THESE AREAS FOR THE PURPOSES OF PROTECTING TREE HEALTH)
- CONSTRUCTION WORKING ZONE** (MANAGED CONSTRUCTION PROCESSES PERMITTED IN ACCORDANCE WITH THE PRINCIPLES SET OUT WITHIN THE ARBORICULTURAL IMPACT ASSESSMENT)
- ANCIENT WOODLAND (W/15m BUFFER ZONE)** (AREA CLASSIFIED AS AN ANCIENT WOODLAND)
- PRIORITY HABITAT** (INDICATES AN AREA OF PRIORITY HABITAT)
- SSSI AREA** (AREA CONTAINING SITE OF SPECIAL SCIENTIFIC INTEREST)
- NATURE RESERVE** (AREA CLASSIFIED AS A LOCAL OR NATIONAL NATURE RESERVE)
- TREE PRESERVATION ORDER** (AREA COVERED BY A TREE PRESERVATION ORDER (TPO))

NO	DATE	DESCRIPTION
A V3	13.02.26	REVISION A (VERSION 3 CHANGE REQUEST)
A V2	14.11.25	REVISION A (VERSION 2 CHANGE REQUEST)
P03	08.01.25	FEATURE AMENDS
P02	19.12.24	SECOND ISSUE
P01	22.11.24	FIRST ISSUE
IR	DATE	DESCRIPTION

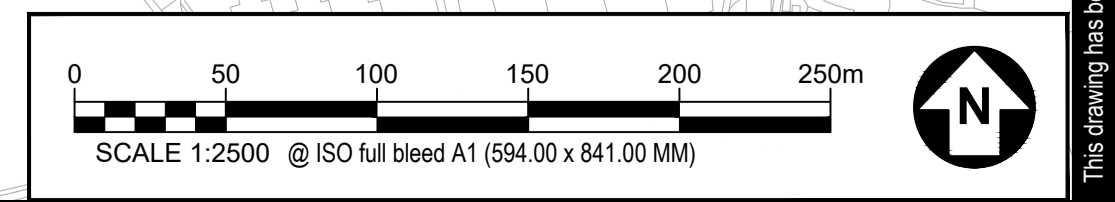
- PROPOSALS KEY**
- PERMANENT OUTFALL
 - DRAINAGE TEMPORARY OUTFALL
 - JOINT BAY
 - PYLON (INDICATIVE)
 - PYLON REMOVAL (INDICATIVE)
 - PYLON MODIFICATION WORKS (INDICATIVE)
 - TEMPORARY OHL STRUCTURE (INDICATIVE)
 - EXISTING PYLON (INDICATIVE)
 - SUBSTATION
 - CONVERTER STATION
 - PERMANENT INFILTRATION POND
 - PERMANENT ATTENUATION POND
 - PERMANENT ACCESS
 - TEMPORARY BELLMOUTH
 - PERMANENT BELLMOUTH
 - RIVER FROMUS BRIDGE CROSSING
 - DRAINAGE TEMPORARY ATTENUATION POND
 - PERMANENT OUTFALL
 - UTILITY DIVERSION ROUTE
 - ACCESS ROUTE
 - PERMANENT INFILTRATION OUTFALL PIPE
 - PERMANENT ATTENUATION OUTFALL PIPE
 - PROW DIVERSION ROUTE
 - PERMANENT MONITORING ACCESS
 - HVDC CABLE ALIGNMENT
 - HVAC CABLE ALIGNMENT
 - PERMANENT DRAIN
 - DRAINAGE TEMPORARY RISING MAIN
 - TEMPORARY ATTENUATION OUTFALL PIPE
 - DRAINAGE TEMPORARY DRAIN CONSTRUCTION WATER
 - DRAINAGE TEMPORARY DRAIN CLEAN WATER
 - TEMPORARY INFILTRATION OUTFALL PIPE
 - SUBSTATION LOD
 - CONVERTER STATION LOD
 - CABLE LOD
 - PERMANENT ACCESS LOD
 - OHL LOD
 - HIGHWAY BELLMOUTH VISIBILITY SPLAY
 - HIGHWAY BELLMOUTH SSD
 - FRICTION SUBSTATION LOD



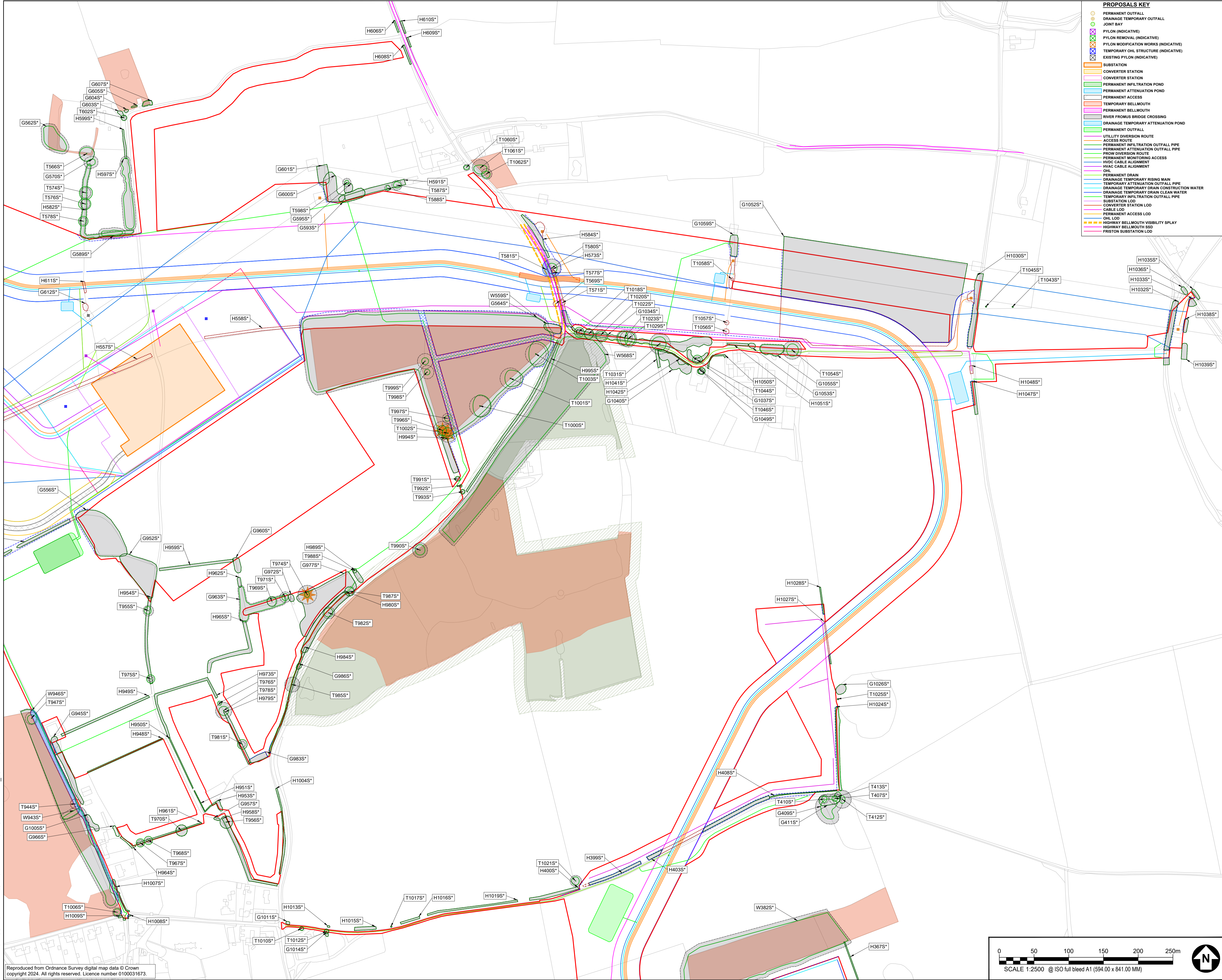
Author: BGO/IAW/JR Checked: TR Approved: AV

Last saved by: BREMER/2025.02.12, Last Plotted: 2025.02.19
Filename: B:\S_JOBS\SEA LINK\CAD\SEA LINK - SUFFOLK SITE - TTP_007.DWG

Reproduced from Ordnance Survey digital map data © Crown copyright 2024. All rights reserved. Licence number 0100031673.



This drawing has been prepared for the use of AECOM's client. It may not be used, modified, reproduced, or relied upon by third parties, except as agreed by AECOM or as required by law. AECOM accepts no responsibility, and denies any liability whatsoever, to any party that uses or relies on this drawing without AECOM's express written consent. Do not scale this document. All measurements must be obtained from the stated dimensions.



PROPOSALS KEY

- PERMANENT OUTFALL
- PERMANENT INFILTRATION OUTFALL
- JOINT BAY
- PYLON (INDICATIVE)
- PYLON REMOVAL (INDICATIVE)
- PYLON MODIFICATION WORKS (INDICATIVE)
- TEMPORARY OHL STRUCTURE (INDICATIVE)
- EXISTING PYLON (INDICATIVE)
- SUBSTATION
- CONVERTER STATION
- CONVERTER STATION
- PERMANENT INFILTRATION POND
- PERMANENT ATTENUATION POND
- PERMANENT ACCESS
- TEMPORARY BELLMOUTH
- PERMANENT BELLMOUTH
- RIVER FROMUS BRIDGE CROSSING
- DRAINAGE TEMPORARY ATTENUATION POND
- PERMANENT OUTFALL
- UTILITY DIVERSION ROUTE
- ACCESS ROUTE
- PERMANENT INFILTRATION OUTFALL PIPE
- PERMANENT ATTENUATION OUTFALL PIPE
- PROV DIVERSION ROUTE
- PERMANENT MONITORING ACCESS
- HVDC CABLE ALIGNMENT
- HVAC CABLE ALIGNMENT
- OHL
- PERMANENT DRAIN
- DRAINAGE TEMPORARY RISING MAIN
- TEMPORARY ATTENUATION OUTFALL PIPE
- DRAINAGE TEMPORARY DRAIN CONSTRUCTION WATER
- DRAINAGE TEMPORARY DRAIN CLEAN WATER
- TEMPORARY INFILTRATION OUTFALL PIPE
- SUBSTATION LOD
- CONVERTER STATION LOD
- CABLE LOD
- PERMANENT ACCESS LOD
- OHL LOD
- HIGHWAY BELLMOUTH VISIBILITY SPLAY
- HIGHWAY BELLMOUTH SSD
- FRISTON SUBSTATION LOD

AECOM

PROJECT
Sea Link (Suffolk)

CLIENT
National Grid

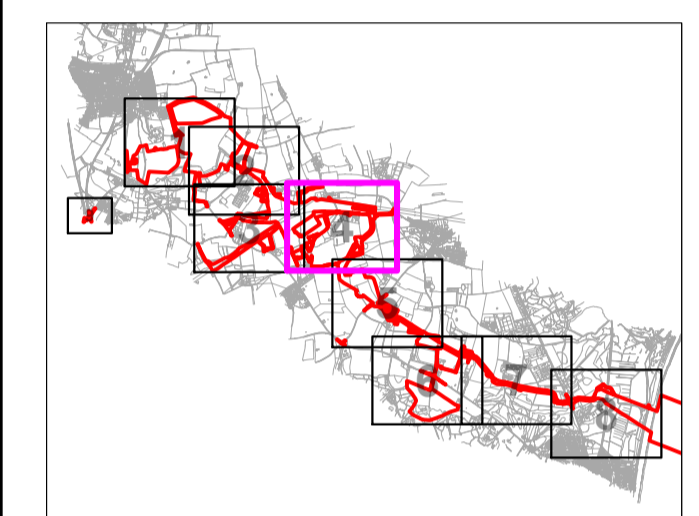
CONSULTANT
AECOM
Mid Point, Alencon Link,
Basingstoke, Hants,
RG21 7PP
Tel +44 (0) 1256 310 200
www.aecom.com

GENERAL NOTES

1. TREE CATEGORIES AS DEFINED BY BS 5837:2012
2. TREE LOCATIONS ARE BASED ON THE OS MAPPING, AERIAL IMAGERY, AND GPS CO-ORDINATES FROM ON SITE WALKOVER.
3. * INDICATES A TREE / GROUP WHOSE POSITION IS APPROXIMATE AS BASED UPON AERIAL PHOTOGRAPHY AND ON SITE OBSERVATIONS.
4. PLANS SHOULD BE READ IN CONJUNCTION WITH THE AECOM ARBORICULTURAL REPORT.
5. THE ORIGINAL OF THIS DRAWING WAS PRODUCED IN COLOUR - A MONOCHROME COPY SHOULD NOT BE RELIED UPON.

DRAWING REFERENCES:
LPA Searches.dwg
OSMA Lines.dwg
Visibility Splays for Vegetation Clearance.dwg
D4 Fromus Crossing Options.dwg
SEAL_MMD-SEAL-ENG-M2-2005.dwg
Rev.C_Draft_Order_Limits.dwg
D4L_Suffolk_Rev C_20251110.dwg

KEY PLAN



ISSUE/REVISION

IR	DATE	DESCRIPTION
A V3	13.02.26	REVISION A (VERSION 3 CHANGE REQUEST)
A V2	14.11.25	REVISION A (VERSION 2 CHANGE REQUEST)
P03	08.01.25	FEATURE AMENDS
P02	19.12.24	SECOND ISSUE
P01	22.11.24	FIRST ISSUE

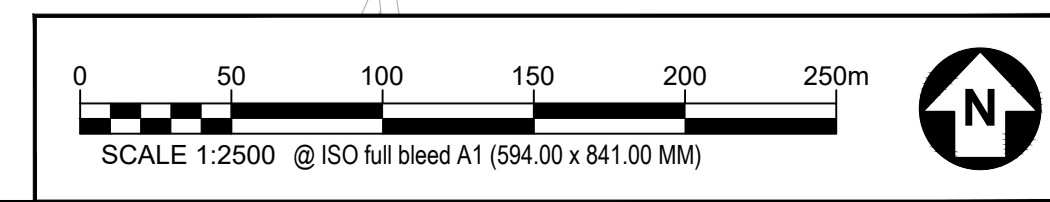
DRAWING STATUS
ISSUE

PROJECT NUMBER
60664038

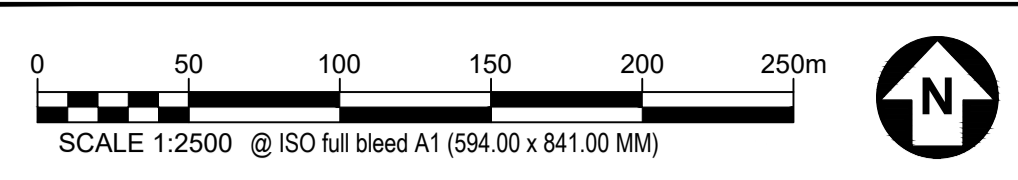
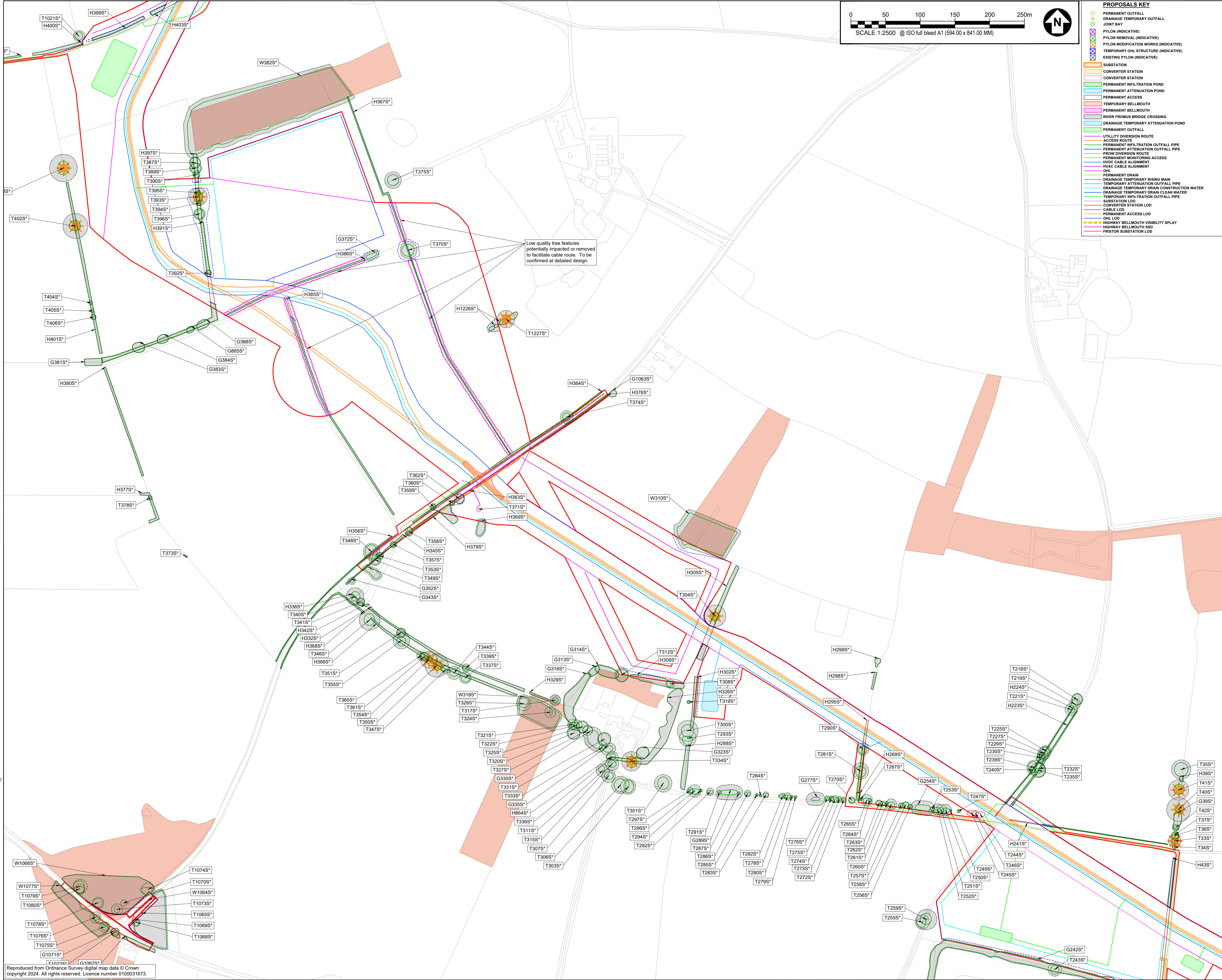
SHEET TITLE
TREE PROTECTION PLAN
SUFFOLK SITE
(SHEET 04)

SHEET NUMBER
60664038-ACM-XX-SK-AB-TTP-004

REV.
A VER 3



This drawing has been prepared for the use of AECOM's client. It may not be used, modified, reproduced or relied upon by third parties, except as agreed by AECOM or as required by law. AECOM accepts no responsibility, and denies any liability whatsoever, to any party that uses or relies on this drawing without AECOM's express written consent. Do not scale this document. All measurements must be obtained from the stated dimensions.



- PROPOSALS KEY**
- PERMANENT OUTFALL
 - PERMANENT TEMPORARY OUTFALL
 - JOINT BAY
 - PLYON (INDICATIVE)
 - PLYON REMOVAL (INDICATIVE)
 - PLYON MODIFICATION WORKS (INDICATIVE)
 - TEMPORARY OHL STRUCTURE (INDICATIVE)
 - EXISTING PLYON (INDICATIVE)
 - SUBSTATION
 - CONVERTER STATION
 - CONVERTER STATION
 - PERMANENT INFILTRATION POND
 - PERMANENT ATTENUATION POND
 - PERMANENT ACCESS
 - TEMPORARY BELLMOUTH
 - PERMANENT BELLMOUTH
 - RIVER FROMUS BRIDGE CROSSING
 - PERMANENT OUTFALL
 - PERMANENT OUTFALL
 - UTILITY DIVERSION ROUTE
 - ACCESS ROUTE
 - PERMANENT INFILTRATION OUTFALL PIPE
 - PERMANENT ATTENUATION OUTFALL PIPE
 - PROV DIVERSION ROUTE
 - PERMANENT MONITORING ACCESS
 - HVDC CABLE ALIGNMENT
 - HVDC CABLE ALIGNMENT
 - OHL
 - PERMANENT DRAIN
 - DRAINAGE TEMPORARY RISING MAIN
 - TEMPORARY INFILTRATION OUTFALL PIPE
 - DRAINAGE TEMPORARY DRAIN CONSTRUCTION WATER
 - DRAINAGE TEMPORARY DRAIN CLEAN WATER
 - TEMPORARY INFILTRATION OUTFALL PIPE
 - SUBSTATION LOD
 - CONVERTER STATION LOD
 - CABLE LOD
 - PERMANENT ACCESS LOD
 - OHL LOD
 - HIGHWAY BELLMOUTH VISIBILITY SPLAY
 - FRISTON SUBSTATION LOD

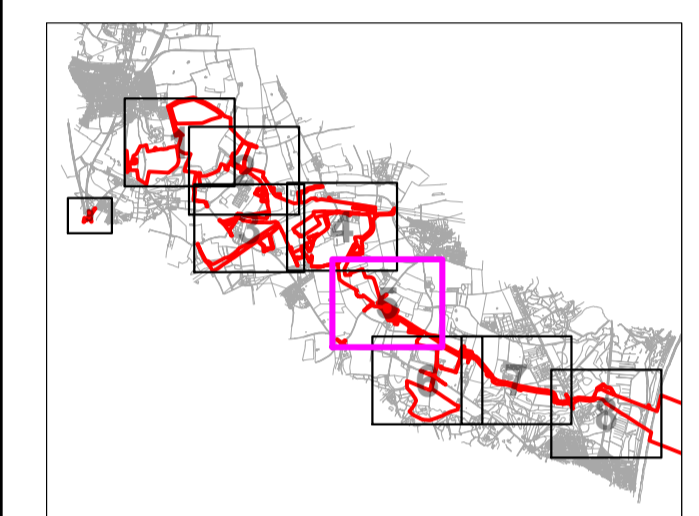
AECOM

PROJECT
Sea Link (Suffolk)

CLIENT
National Grid

CONSULTANT
AECOM
Mid Point, Alencon Link,
Basingstoke, Hants,
RG21 7PP
Tel +44 (0) 1256 310 200
www.aecom.com

- GENERAL NOTES**
1. TREE CATEGORIES AS DEFINED BY BS 5837:2012
 2. TREE LOCATIONS ARE BASED ON THE OS MAPPING, AERIAL IMAGERY, AND GPS CO-ORDINATES FROM ON SITE WALKOVER.
 3. * INDICATES A TREE / GROUP WHOSE POSITION IS APPROXIMATE AS BASED UPON AERIAL PHOTOGRAPHY AND ON SITE OBSERVATIONS.
 4. PLANS SHOULD BE READ IN CONJUNCTION WITH THE AECOM ARBORICULTURAL REPORT.
 5. THE ORIGINAL OF THIS DRAWING WAS PRODUCED IN COLOUR - A MONOCHROME COPY SHOULD NOT BE RELIED UPON.
 6. DRAWING REFERENCES:
LPA Searches.dwg
OSMA Lines.dwg
Visibility Splays for Vegetation Clearance.dwg
D4 Fromus Crossing Options.dwg
SEA_LMD-SEA-ENG-M2-0095.dwg
Rev.C_Draft_Order_Limits.dwg
D4_Suffolk_Rev.C_20251110.dwg



- KEY**
- ORDER LIMITS
 - EXISTING TREE, GROUP, WOODLAND, OR HEDGE TO BE RETAINED
 - EXISTING TREE, GROUP, WOODLAND, OR HEDGE TO BE REMOVED
 - ROOT PROTECTION AREA OF RETAINED TREES (AS DEFINED BY BS 5837:2012)
 - VETERAN TREE MARKER (INDICATES POSITION OF TREE OF VETERAN STATUS)
 - ANCIENT TREE MARKER (INDICATES POSITION OF TREE OF ANCIENT STATUS)
 - TREE PROTECTION FENCING
 - CONSTRUCTION EXCLUSION ZONE (FENCING OF PLANT MATERIALS STORAGE, EXCAVATION AND ALL OTHER CONSTRUCTION ACTIVITIES ARE EXCLUDED WITHIN THESE AREAS FOR THE PURPOSES OF PROTECTING TREE HEALTH)
 - CONSTRUCTION WORKING ZONE (MANAGED CONSTRUCTION PROCESSES PERMITTED IN ACCORDANCE WITH THE PRINCIPLES SET OUT WITHIN THE ARBORICULTURAL IMPACT ASSESSMENT)
 - ANCIENT WOODLAND (W15m BUFFER ZONE) (AREA CLASSIFIED AS AN ANCIENT WOODLAND)
 - PRIORITY HABITAT (FOUNDED AREA OF PRIORITY HABITAT)
 - SSSI AREA (AREA CONTAINING SITE OF SPECIAL SCIENTIFIC INTEREST)
 - NATURE RESERVE (AREA CLASSIFIED AS A LOCAL OR NATIONAL NATURE RESERVE)
 - TREE PRESERVATION ORDER (AREA COVERED BY A TREE PRESERVATION ORDER (TPO))

ISSUE/REVISION

REV	DATE	DESCRIPTION
A V3	13.02.26	REVISION A (VERSION 3 CHANGE REQUEST)
A V2	14.11.25	REVISION A (VERSION 2 CHANGE REQUEST)
P03	08.01.25	FEATURE AMENDS
P02	19.12.24	SECOND ISSUE
P01	22.11.24	FIRST ISSUE
IR		DATE DESCRIPTION

DRAWING STATUS
ISSUE

PROJECT NUMBER
60664038

SHEET TITLE
TREE PROTECTION PLAN
SUFFOLK SITE
(SHEET 05)

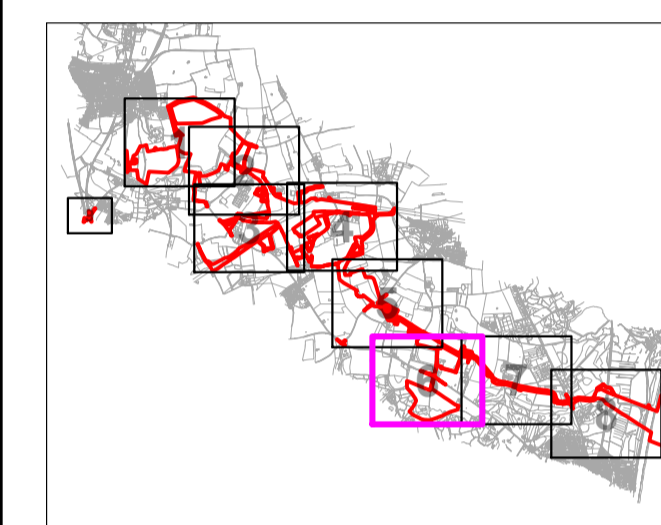
SHEET NUMBER **REV.**
60664038-ACM-XX-SK-AB-TPP-005 A VER 3

This drawing has been prepared for the use of AECOM's client. It may not be used, modified, reproduced or relied upon by third parties, except as agreed by AECOM or as required by law. AECOM accepts no responsibility, and denies any liability whatsoever, to any party that uses or relies on this drawing without AECOM's express written consent. Do not scale this document. All measurements must be obtained from the stated dimensions.

GENERAL NOTES

- TREE CATEGORIES AS DEFINED BY BS 5837:2012
- TREE LOCATIONS ARE BASED ON THE OS MAPPING, AERIAL IMAGERY, AND GPS CO-ORDINATES FROM ON SITE WALKOVER.
- * INDICATES A TREE / GROUP WHOSE POSITION IS APPROXIMATE AS BASED UPON AERIAL PHOTOGRAPHY AND ON SITE OBSERVATIONS.
- PLANS SHOULD BE READ IN CONJUNCTION WITH THE AECOM ARBORICULTURAL REPORT.
- THE ORIGINAL OF THIS DRAWING WAS PRODUCED IN COLOUR - A MONOCHROME COPY SHOULD NOT BE RELIED UPON.
- DRAWING REFERENCES:
LPA Searches.dwg
OSMA Lines.dwg
Visibility Splays for Vegetation Clearance.dwg
D4 Fromus Crossing Options.dwg
SEAL MMD-SEAL-ENG-M2-0095.dwg
Rev.C, Draft Order Limits.dwg
D4L_Suffolk_Rev C_20251110.dwg

KEY PLAN



KEY

- ORDER LIMITS**
- EXISTING TREE, GROUP, WOODLAND, OR HEDGE TO BE RETAINED
- EXISTING TREE, GROUP, WOODLAND, OR HEDGE TO BE REMOVED
- ROOT PROTECTION AREA OF RETAINED TREES (AS DEFINED BY BS 5837:2012)
- VETERAN TREE MARKER (INDICATES POSITION OF TREE OF VETERAN STATUS)
- ANCIENT TREE MARKER (INDICATES POSITION OF TREE OF ANCIENT STATUS)
- TREE PROTECTION FENCING**
- CONSTRUCTION EXCLUSION ZONE (FRONTS OF PLANT MATERIALS STORAGE, EXCAVATION AND ALL OTHER CONSTRUCTION ACTIVITIES ARE EXCLUDED WITHIN THESE AREAS FOR THE PURPOSES OF PROTECTING TREE HEALTH)
- CONSTRUCTION WORKING ZONE (MANAGED CONSTRUCTION PROCESSES PERMITTED IN ACCORDANCE WITH THE PRINCIPLES SET OUT WITHIN THE ARBORICULTURAL IMPACT ASSESSMENT)
- ANCIENT WOODLAND (W15m BUFFER ZONE) (AREA CLASSIFIED AS AN ANCIENT WOODLAND)
- PRIORITY HABITAT (CONSIDERED AN AREA OF PRIORITY HABITAT)
- SSSI AREA (AREA CONTAINING SITE OF SPECIAL SCIENTIFIC INTEREST)
- NATURE RESERVE (AREA CLASSIFIED AS A LOCAL OR NATIONAL NATURE RESERVE)
- TREE PRESERVATION ORDER (AREA COVERED BY A TREE PRESERVATION ORDER (TPO))

ISSUE/REVISION

IR	DATE	DESCRIPTION
A V3	13.02.26	REVISION A (VERSION 3 CHANGE REQUEST)
A V2	14.11.25	REVISION A (VERSION 2 CHANGE REQUEST)
P03	08.01.25	FEATURE AMENDS
P02	19.12.24	SECOND ISSUE
P01	22.11.24	FIRST ISSUE

DRAWING STATUS

ISSUE

PROJECT NUMBER

60664038

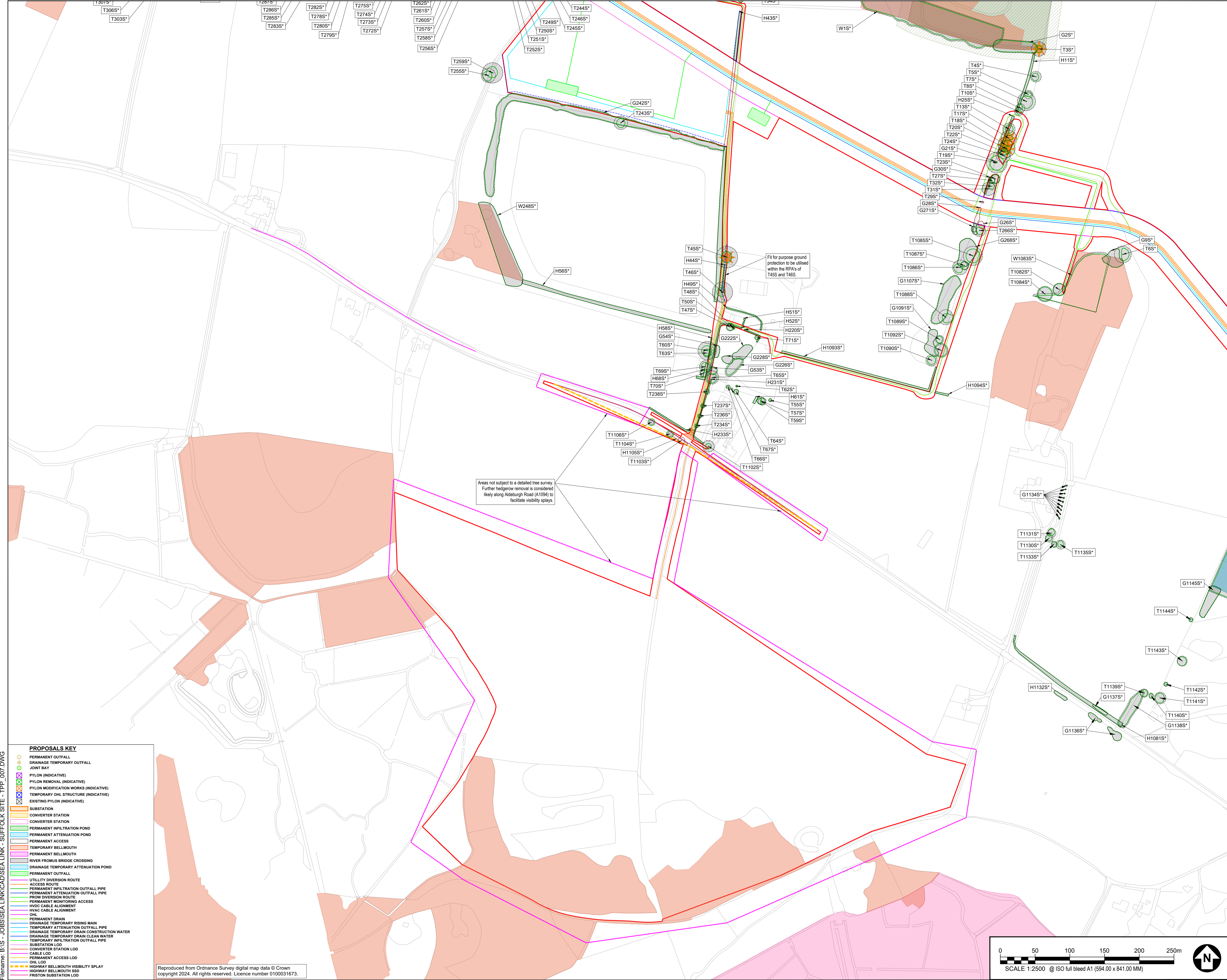
SHEET TITLE

TREE PROTECTION PLAN
SUFFOLK SITE
(SHEET 06)

SHEET NUMBER

60664038-ACM-XX-SK-AB-TPP-006 A VER 3

REV.

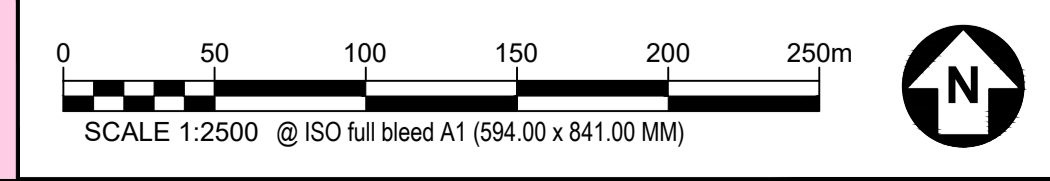


Areas not subject to a detailed tree survey. Further hedgerow removal is considered likely along Aldeburgh Road (A1094) to facilitate visibility splays.

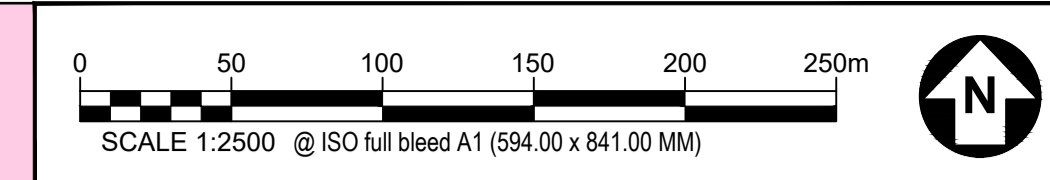
Fit for purpose ground protection to be utilised within the RPA's of T45S and T46S.

PROPOSALS KEY

- PERMANENT OUTFALL
- DRAINAGE TEMPORARY OUTFALL
- JOINT BAY
- PYLON (INDICATIVE)
- PYLON REMOVAL (INDICATIVE)
- PYLON MODIFICATION WORKS (INDICATIVE)
- TEMPORARY OHL STRUCTURE (INDICATIVE)
- EXISTING PYLON (INDICATIVE)
- SUBSTATION
- CONVERTER STATION
- PERMANENT INFILTRATION POND
- PERMANENT ATTENUATION POND
- PERMANENT ACCESS
- TEMPORARY BELLMOUTH
- PERMANENT BELLMOUTH
- RIVER FROMUS BRIDGE CROSSING
- DRAINAGE TEMPORARY ATTENUATION POND
- PERMANENT OUTFALL
- UTILITY DIVERSION ROUTE
- ACCESS ROUTE
- PERMANENT INFILTRATION OUTFALL PIPE
- PERMANENT ATTENUATION OUTFALL PIPE
- PROW DIVERSION ROUTE
- PERMANENT MONITORING ACCESS
- HVDC CABLE ALIGNMENT
- HVAC CABLE ALIGNMENT
- OHL
- PERMANENT DRAIN
- DRAINAGE TEMPORARY RISING MAIN
- TEMPORARY ATTENUATION OUTFALL PIPE
- DRAINAGE TEMPORARY DRAIN CONSTRUCTION WATER
- DRAINAGE TEMPORARY DRAIN CLEAN WATER
- TEMPORARY INFILTRATION OUTFALL PIPE
- SUBSTATION LOD
- CONVERTER STATION LOD
- CABLE LOD
- PERMANENT ACCESS LOD
- OHL LOD
- PERMANENT BELLMOUTH VISIBILITY SPLAY
- PERMANENT BELLMOUTH SSD
- FRISTON SUBSTATION LOD



This drawing has been prepared for the use of AECOM's client. It may not be used, modified, reproduced or relied upon by third parties, except as agreed by AECOM or as required by law. AECOM accepts no responsibility, and denies any liability whatsoever, to any party that uses or relies on this drawing without AECOM's express written consent. Do not scale this document. All measurements must be obtained from the stated dimensions.



PROJECT
Sea Link (Suffolk)

CLIENT
National Grid

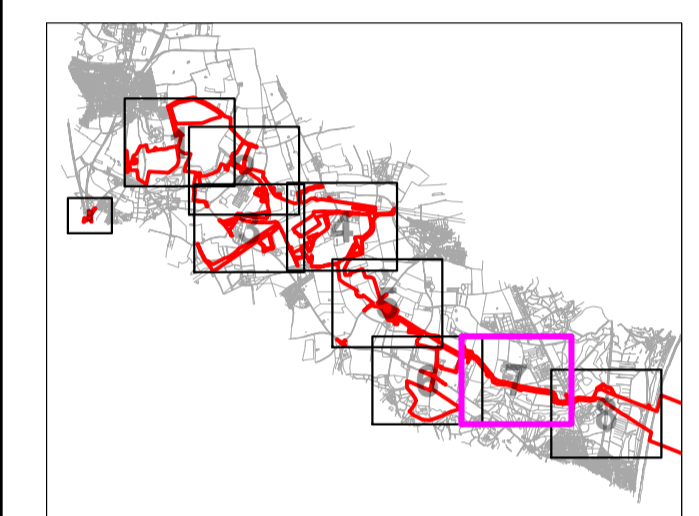
CONSULTANT

AECOM
Mid Point, Alencon Link,
Basingstoke, Hants,
RG21 7PP
Tel +44 (0) 1256 310 200
www.aecom.com

GENERAL NOTES

1. TREE CATEGORIES AS DEFINED BY BS 5837:2012
2. TREE LOCATIONS ARE BASED ON THE OS MAPPING, AERIAL IMAGERY, AND GPS CO-ORDINATES FROM ON SITE WALKOVER.
3. * INDICATES A TREE / GROUP WHOSE POSITION IS APPROXIMATE AS BASED UPON AERIAL PHOTOGRAPHY AND ON SITE OBSERVATIONS.
4. PLANS SHOULD BE READ IN CONJUNCTION WITH THE AECOM ARBORICULTURAL REPORT.
5. THE ORIGINAL OF THIS DRAWING WAS PRODUCED IN COLOUR - A MONOCHROME COPY SHOULD NOT BE RELIED UPON.
6. DRAWING REFERENCES:
LPA Searches.dwg
OSMMA Lines.dwg
Visibility Spines for Vegetation Clearance.dwg
D4 From Crossing Options.dwg
SEAL MMD-SEAL-ENG-M2-0095.dwg
Rev C - Draft Order Limits.dwg
D4L_Suffolk_Rev C_20251110.dwg

KEY PLAN



KEY

- ORDER LIMITS
- EXISTING TREE, GROUP, WOODLAND, OR HEDGE TO BE RETAINED
- EXISTING TREE, GROUP, WOODLAND, OR HEDGE TO BE REMOVED
- ROOT PROTECTION AREA OF RETAINED TREES (AS DEFINED BY BS 5837:2012)
- VETERAN TREE MARKER (INDICATES POSITION OF TREE OF VETERAN STATUS)
- ANCIENT TREE MARKER (INDICATES POSITION OF TREE OF ANCIENT STATUS)
- TREE PROTECTION FENCING
- CONSTRUCTION EXCLUSION ZONE (TRACING OF PLANT MATERIALS STORAGE, SIGNIFICATION AND ALL OTHER CONSTRUCTION ACTIVITIES ARE EXCLUDED WITHIN THESE AREAS FOR THE PURPOSES OF PROTECTING TREE HEALTH)
- CONSTRUCTION WORKING ZONE (MANAGED CONSTRUCTION PROCESSES PERMITTED IN ACCORDANCE WITH THE PRINCIPLES SET OUT WITHIN THE ARBORICULTURAL IMPACT ASSESSMENT)
- ANCIENT WOODLAND (W15m BUFFER ZONE) (AREA CLASSIFIED AS AN ANCIENT WOODLAND)
- PRIORITY HABITAT (AREA CLASSIFIED AS PRIORITY HABITAT)
- SSSI AREA (AREA CONTAINING SITE OF SPECIAL SCIENTIFIC INTEREST)
- NATURE RESERVE (AREA CLASSIFIED AS A LOCAL OR NATIONAL NATURE RESERVE)
- TREE PRESERVATION ORDER (AREA COVERED BY A TREE PRESERVATION ORDER (TPO))

ISSUE/REVISION

NO	DATE	DESCRIPTION
A V3	13.02.26	REVISION A (VERSION 3 CHANGE REQUEST)
A V2	14.11.25	REVISION A (VERSION 2 CHANGE REQUEST)
P03	08.01.25	FEATURE AMENDS
P02	19.12.24	SECOND ISSUE
P01	22.11.24	FIRST ISSUE
IR		DATE DESCRIPTION

DRAWING STATUS

ISSUE

PROJECT NUMBER

60664038

SHEET TITLE

TREE PROTECTION PLAN
SUFFOLK SITE
(SHEET 07)

SHEET NUMBER

60664038-ACM-XX-SK-AB-TPP-007 A VER 3

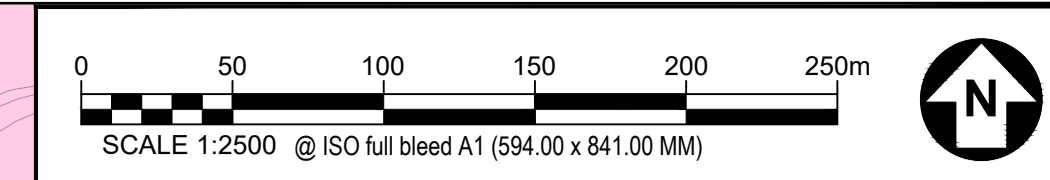
REV.

- PROPOSALS KEY**
- PERMANENT OUTFALL
 - DRAINAGE TEMPORARY OUTFALL JOINT BAY
 - PYLON (INDICATIVE)
 - PYLON REMOVAL (INDICATIVE)
 - PYLON MODIFICATION WORKS (INDICATIVE)
 - TEMPORARY OHL STRUCTURE (INDICATIVE)
 - EXISTING PYLON (INDICATIVE)
 - SUBSTATION
 - CONVERTER STATION
 - PERMANENT INFILTRATION POND
 - PERMANENT ATTENUATION POND
 - PERMANENT ACCESS
 - TEMPORARY BELLMOUTH
 - PERMANENT BELLMOUTH
 - RIVER FROMUS BRIDGE CROSSING
 - DRAINAGE TEMPORARY ATTENUATION POND
 - PERMANENT OUTFALL
 - UTILITY DIVERSION ROUTE
 - ACCESS ROUTE
 - PERMANENT INFILTRATION OUTFALL PIPE
 - PERMANENT ATTENUATION OUTFALL PIPE
 - PROV DIVERSION ROUTE
 - PERMANENT MONITORING ACCESS
 - HVDC CABLE ALIGNMENT
 - HVAC CABLE ALIGNMENT
 - OHL
 - PERMANENT DRAIN
 - DRAINAGE TEMPORARY RISING MAIN
 - TEMPORARY ATTENUATION OUTFALL PIPE
 - DRAINAGE TEMPORARY DRAIN CONSTRUCTION WATER
 - DRAINAGE TEMPORARY DRAIN CLEAN WATER
 - TEMPORARY INFILTRATION OUTFALL PIPE
 - SUBSTATION LOD
 - CONVERTER STATION LOD
 - CABLE LOD
 - PERMANENT ACCESS LOD
 - OHL LOD
 - PERMANENT BELLMOUTH VISIBILITY SPLAY
 - HIGHWAY BELLMOUTH SSD
 - HIGHWAY BELLMOUTH SSD
 - FRISTON SUBSTATION LOD

Reproduced from Ordnance Survey digital map data © Crown copyright 2024. All rights reserved. Licence number 0100051673.

At the detailed design stage the final alignment and installation method of the cable will be determined which will allow for the retention of all third-party trees with any potential impacts minimised or avoided.

This drawing has been prepared for the use of AECOM's client. It may not be used, modified, reproduced or relied upon by third parties, except as agreed by AECOM or as required by law. AECOM accepts no responsibility, and denies any liability whatsoever, to any party that uses or relies on this drawing without AECOM's express written consent. Do not scale this document. All measurements must be obtained from the stated dimensions.



PROJECT
Sea Link (Suffolk)

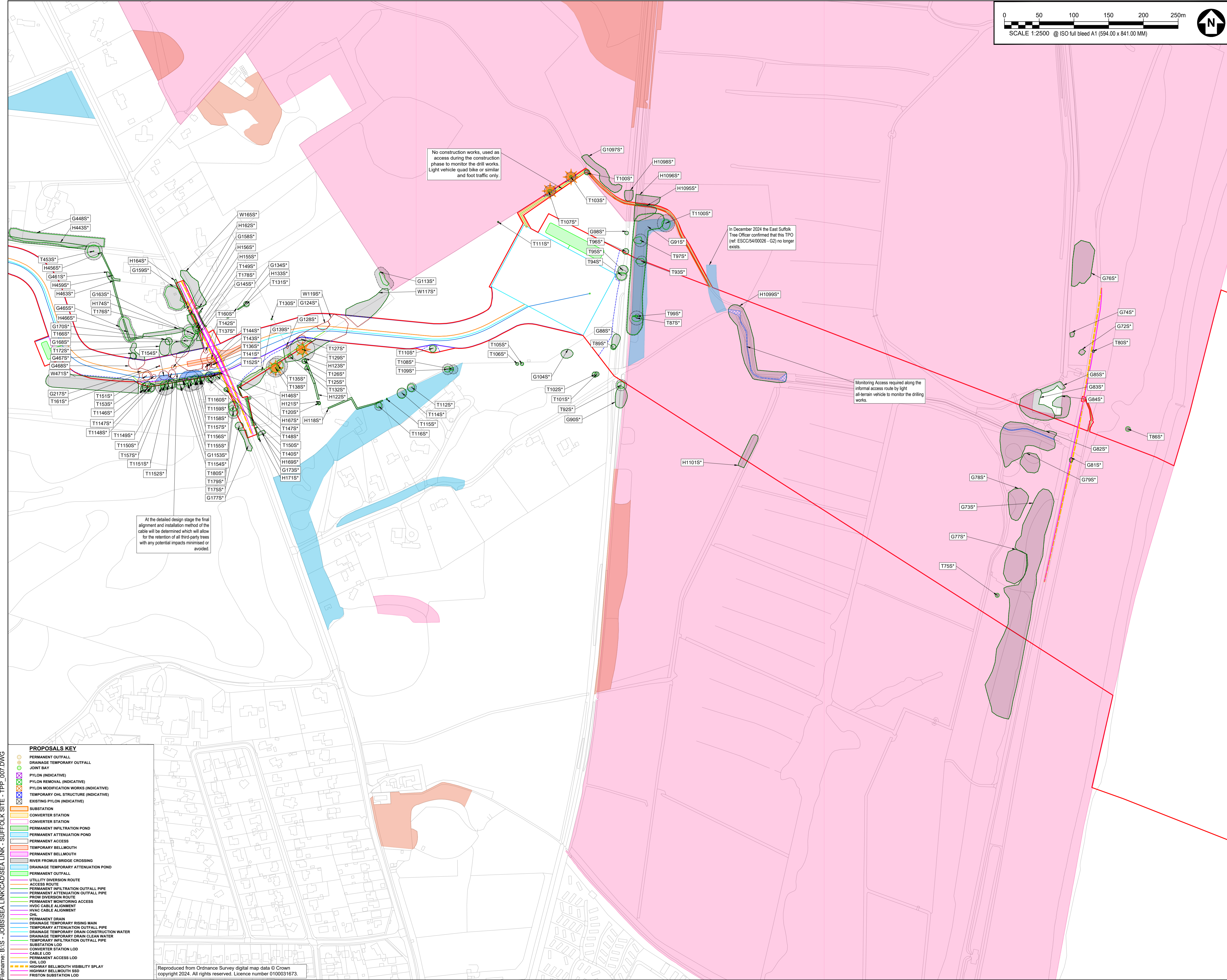
CLIENT
National Grid

CONSULTANT
AECOM
Mid Point, Alencon Link,
Basingstoke, Hants,
RG21 7PP
Tel +44 (0) 1256 310 200
www.aecom.com

GENERAL NOTES

1. TREE CATEGORIES AS DEFINED BY BS 5837:2012
2. TREE LOCATIONS ARE BASED ON THE OS MAPPING, AERIAL IMAGERY, AND GPS CO-ORDINATES FROM ON SITE WALKOVER.
3. * INDICATES A TREE / GROUP WHOSE POSITION IS APPROXIMATE AS BASED UPON AERIAL PHOTOGRAPHY AND ON SITE OBSERVATIONS.
4. PLANS SHOULD BE READ IN CONJUNCTION WITH THE AECOM ARBOCULTURAL REPORT.
5. THE ORIGINAL OF THIS DRAWING WAS PRODUCED IN COLOUR - A MONOCHROME COPY SHOULD NOT BE RELIED UPON.
6. DRAWING REFERENCES:
LPA Searches.dwg
OSMA Lines.dwg
Visibility Spheres for Vegetation Clearance.dwg
D4 Fromus Crossing Options.dwg
SEA_LMD-SEA-ENG-M2-2005.dwg
Rev.C_Draft_Order_Limits.dwg
D4_Su509k_Rev C_20251110.dwg

KEY PLAN



At the detailed design stage the final alignment and installation method of the cable will be determined which will allow for the retention of all third-party trees with any potential impacts minimised or avoided.

No construction works, used as access during the construction phase to monitor the drill works. Light vehicle quad bike or similar and foot traffic only.

In December 2024 the East Suffolk Tree Officer confirmed that this TPO (ref. ESCC54/00026 - G2) no longer exists.

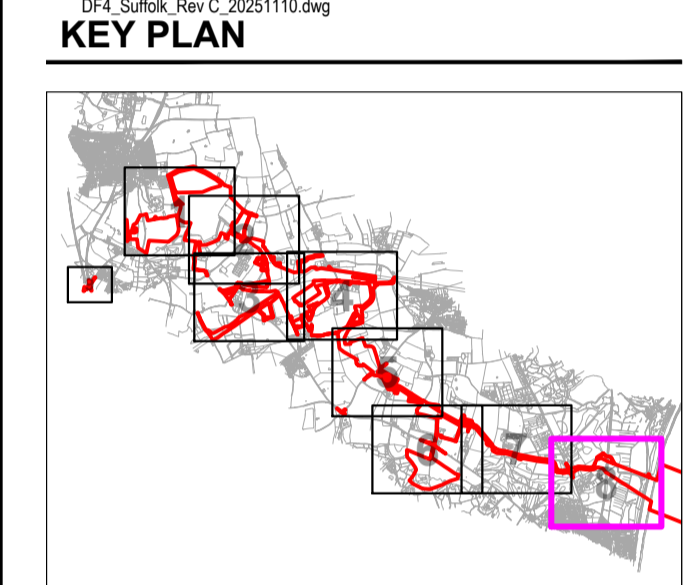
Monitoring Access required along the informal access route by light all-terrain vehicle to monitor the drilling works.

List saved by: BREMER/2025.02.12, Last Plotted: 2025.02.19
Filename: B:\JOB\SEA LINK\CAD\SEA LINK - SUFFOLK SITE - TPP_007.DWG

PROPOSALS KEY

- PERMANENT OUTFALL
- DRAINAGE TEMPORARY OUTFALL
- JOINT BAY
- PYLON (INDICATIVE)
- PYLON REMOVAL (INDICATIVE)
- PYLON MODIFICATION WORKS (INDICATIVE)
- TEMPORARY OHL STRUCTURE (INDICATIVE)
- EXISTING PYLON (INDICATIVE)
- SUBSTATION
- CONVERTER STATION
- CONVERTER STATION
- PERMANENT INFILTRATION POND
- PERMANENT ATTENUATION POND
- PERMANENT ACCESS
- TEMPORARY BELLMOUTH
- PERMANENT BELLMOUTH
- RIVER FROMUS BRIDGE CROSSING
- DRAINAGE TEMPORARY ATTENUATION POND
- PERMANENT OUTFALL
- UTILITY DIVERSION ROUTE
- ACCESS ROUTE
- PERMANENT INFILTRATION OUTFALL PIPE
- PERMANENT ATTENUATION OUTFALL PIPE
- PROW DIVERSION ROUTE
- PERMANENT MONITORING ACCESS
- HVDC CABLE ALIGNMENT
- HVAC CABLE ALIGNMENT
- OHL
- PERMANENT DRAIN
- DRAINAGE TEMPORARY RISING MAIN
- TEMPORARY ATTENUATION OUTFALL PIPE
- DRAINAGE TEMPORARY DRAIN CONSTRUCTION WATER
- DRAINAGE TEMPORARY DRAIN CLEAN WATER
- TEMPORARY INFILTRATION OUTFALL PIPE
- SUBSTATION LOD
- CONVERTER STATION LOD
- CABLE LOD
- PERMANENT ACCESS LOD
- OHL LOD
- PERMANENT BELLMOUTH VISIBILITY SPLAY
- PERMANENT BELLMOUTH SSD
- FRISTON SUBSTATION LOD

Reproduced from Ordnance Survey digital map data © Crown copyright 2024. All rights reserved. Licence number 0100031673.



KEY

- ORDER LIMITS
- EXISTING TREE, GROUP, WOODLAND, OR HEDGE TO BE RETAINED
- EXISTING TREE, GROUP, WOODLAND, OR HEDGE TO BE REMOVED
- ROOT PROTECTION AREA OF RETAINED TREES (AS DEFINED BY BS 5837:2012)
- VETERAN TREE MARKER (INDICATES POSITION OF TREE OF VETERAN STATUS)
- ANCIENT TREE MARKER (INDICATES POSITION OF TREE OF ANCIENT STATUS)
- TREE PROTECTION FENCING
- CONSTRUCTION EXCLUSION ZONE (TRUCKING OF PLANT, MATERIALS STORAGE, DECONTAMINATION AND ALL OTHER CONSTRUCTION ACTIVITIES ARE EXCLUDED WITHIN THESE AREAS FOR THE PURPOSES OF PROTECTING TREE HEALTH)
- CONSTRUCTION WORKING ZONE (MANAGED CONSTRUCTION PROCESSES PERMITTED IN ACCORDANCE WITH THE PRINCIPLES SET OUT WITHIN THE ARBOCULTURAL IMPACT ASSESSMENT)
- ANCIENT WOODLAND (W15m BUFFER ZONE) (AREA CLASSIFIED AS AN ANCIENT WOODLAND)
- PRIORITY HABITAT (CONSIDERED AN AREA OF PRIORITY HABITAT)
- SSSI AREA (AREA CONTAINING SITE OF SPECIAL SCIENTIFIC INTEREST)
- NATURE RESERVE (AREA CLASSIFIED AS A LOCAL OR NATIONAL NATURE RESERVE)
- TREE PRESERVATION ORDER (AREA COVERED BY A TREE PRESERVATION ORDER (TPO))

ISSUE/REVISION

IR	DATE	DESCRIPTION
A V3	13.02.26	REVISION A (VERSION 3 CHANGE REQUEST)
A V2	14.11.25	REVISION A (VERSION 2 CHANGE REQUEST)
P03	08.01.25	FEATURE AMENDS
P02	19.12.24	SECOND ISSUE
P01	22.11.24	FIRST ISSUE

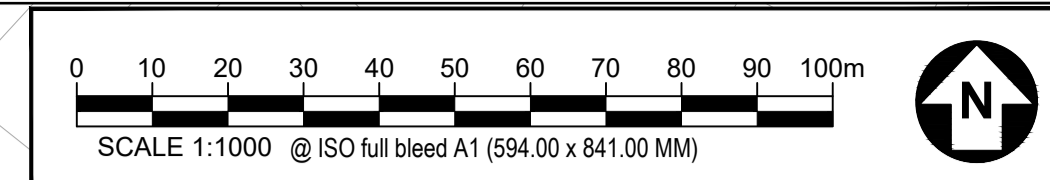
DRAWING STATUS
ISSUE

PROJECT NUMBER
60664038

SHEET TITLE
TREE PROTECTION PLAN
SUFFOLK SITE
(SHEET 08)

SHEET NUMBER **REV.**
60664038-ACM-XX-SK-AB-TPP-008 A VER 3

This drawing has been prepared for the use of AECOM's client. It may not be used, modified, reproduced or relied upon by third parties, except as agreed by AECOM or as required by law. AECOM accepts no responsibility, and denies any liability whatsoever, to any party that uses or relies on this drawing without AECOM's express written consent. Do not scale this document. All measurements must be obtained from the stated dimensions.

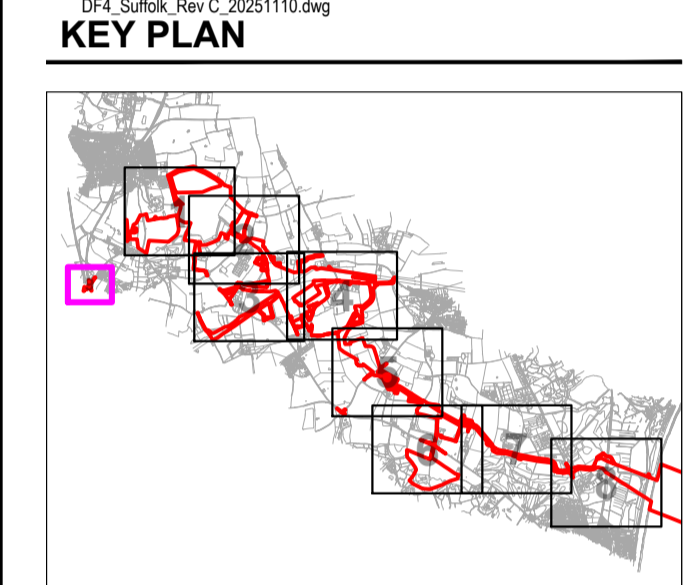


PROJECT
Sea Link (Suffolk)

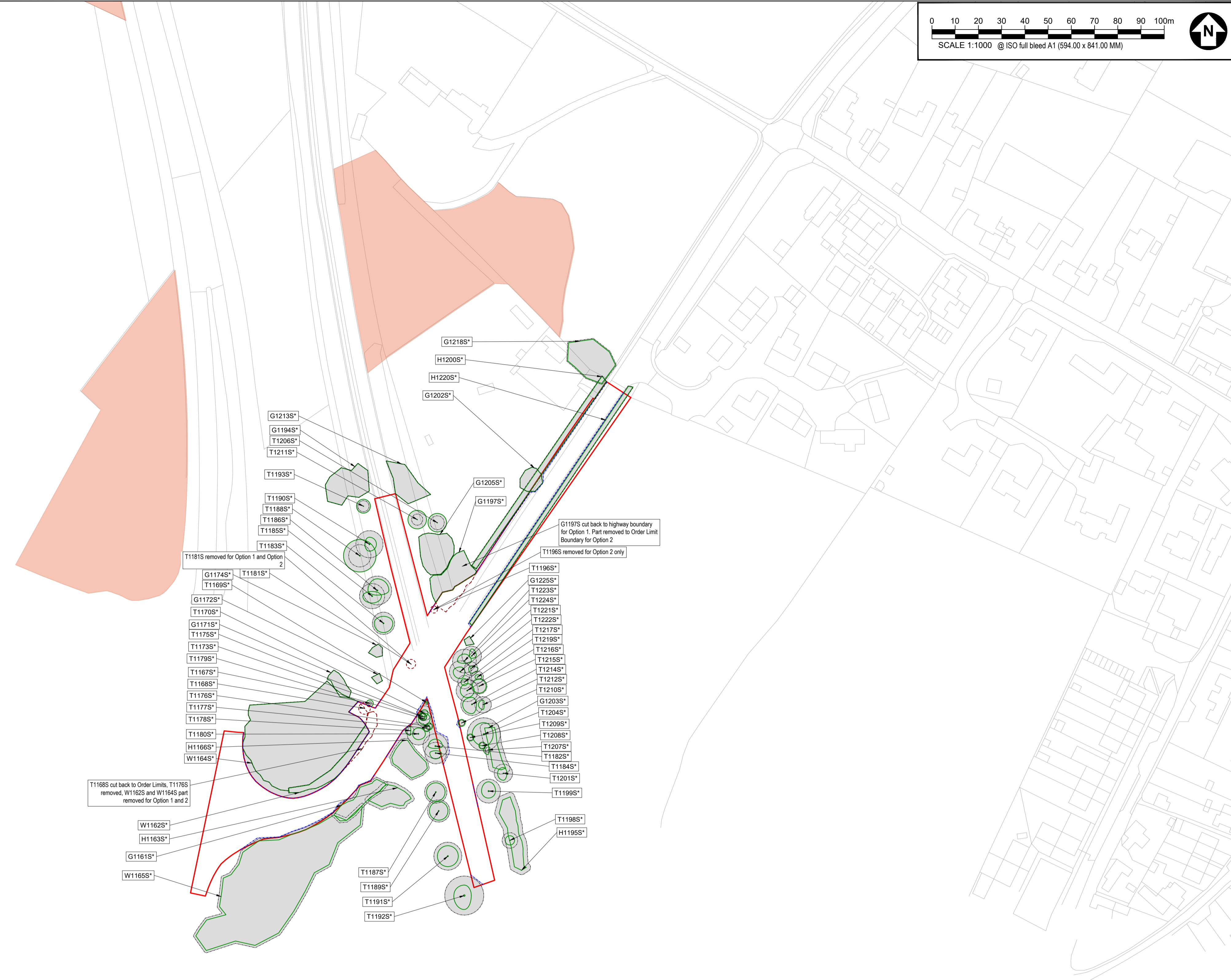
CLIENT
National Grid

CONSULTANT
AECOM
Mid Point, Alconon Link,
Basingstoke, Hants,
RG21 7PP
Tel +44 (0) 1256 310 200
www.aecom.com

- GENERAL NOTES**
- TREE CATEGORIES AS DEFINED BY BS 5837:2012
 - TREE LOCATIONS ARE BASED ON THE OS MAPPING, AERIAL IMAGERY, AND GPS CO-ORDINATES FROM ON SITE WALKOVER.
 - 3 * INDICATES A TREE / GROUP WHOSE POSITION IS APPROXIMATE AS BASED UPON AERIAL PHOTOGRAPHY AND ON SITE OBSERVATIONS.
 - PLANS SHOULD BE READ IN CONJUNCTION WITH THE AECOM ARBORICULTURAL REPORT.
 - THE ORIGINAL OF THIS DRAWING WAS PRODUCED IN COLOUR - A MONOCHROME COPY SHOULD NOT BE RELIED UPON.
 - DRAWING REFERENCES:
LPA Searches.dwg
OSMMA Lines.dwg
Visibility Spline for Vegetation Clearance.dwg
D4 Fromus Crossing Options.dwg
SEAL_MMD-SEAL-ENG-M2-0095.dwg
Rev.C_Draft_Order_Limits.dwg
D4L_Suffolk_Rev C_20251110.dwg



- KEY**
- ORDER LIMITS
 - EXISTING TREE, GROUP, WOODLAND, OR HEDGE TO BE RETAINED
 - EXISTING TREE, GROUP, WOODLAND, OR HEDGE TO BE REMOVED
 - ROOT PROTECTION AREA OF RETAINED TREES (AS DEFINED BY BS 5837:2012)
 - VETERAN TREE MARKER (INDICATES POSITION OF TREE OF VETERAN STATUS)
 - ANCIENT TREE MARKER (INDICATES POSITION OF TREE OF ANCIENT STATUS)
 - TREE PROTECTION FENCING
 - CONSTRUCTION EXCLUSION ZONE (FENCING OF PLANT MATERIALS STORAGE, DECONTAMINATION AND ALL OTHER CONSTRUCTION ACTIVITIES ARE EXCLUDED WITHIN THESE AREAS FOR THE PURPOSES OF PROTECTING TREE HEALTH)
 - CONSTRUCTION WORKING ZONE (MANAGED CONSTRUCTION PROCESSES PERMITTED IN ACCORDANCE WITH THE PRINCIPLES SET OUT WITHIN THE ARBORICULTURAL IMPACT ASSESSMENT)
 - ANCIENT WOODLAND (W15m BUFFER ZONE) (AREA CLASSIFIED AS AN ANCIENT WOODLAND)
 - PRIORITY HABITAT (CONSIDERED AN AREA OF PRIORITY HABITAT)
 - SSSI AREA (AREA CONTAINING SITE OF SPECIAL SCIENTIFIC INTEREST)
 - NATURE RESERVE (AREA CLASSIFIED AS A LOCAL OR NATIONAL NATURE RESERVE)
 - TREE PRESERVATION ORDER (AREA COVERED BY A TREE PRESERVATION ORDER (TPO))



- PROPOSALS KEY**
- PERMANENT OUTFALL
 - DRAINAGE TEMPORARY OUTFALL
 - JOINT BAY
 - PYLON (INDICATIVE)
 - PYLON REMOVAL (INDICATIVE)
 - PYLON MODIFICATION WORKS (INDICATIVE)
 - TEMPORARY OHL STRUCTURE (INDICATIVE)
 - EXISTING PYLON (INDICATIVE)
 - SUBSTATION
 - CONVERTER STATION
 - CONVERTER STATION
 - PERMANENT INFILTRATION POND
 - PERMANENT ATTENUATION POND
 - PERMANENT ACCESS
 - TEMPORARY BELLMOUTH
 - PERMANENT BELLMOUTH
 - RIVER FROMUS BRIDGE CROSSING
 - DRAINAGE TEMPORARY ATTENUATION POND
 - PERMANENT OUTFALL
 - UTILITY DIVERSION ROUTE
 - ACCESS ROUTE
 - PERMANENT INFILTRATION OUTFALL PIPE
 - PERMANENT ATTENUATION OUTFALL PIPE
 - PROW DIVERSION ROUTE
 - PERMANENT MONITORING ACCESS
 - HVDC CABLE ALIGNMENT
 - HVAC CABLE ALIGNMENT
 - OHL
 - PERMANENT DRAIN
 - DRAINAGE TEMPORARY RISING MAIN
 - TEMPORARY ATTENUATION OUTFALL PIPE
 - DRAINAGE TEMPORARY DRAIN CONSTRUCTION WATER
 - DRAINAGE TEMPORARY DRAIN CLEAN WATER
 - TEMPORARY INFILTRATION OUTFALL PIPE
 - SUBSTATION LOD
 - CONVERTER STATION LOD
 - CABLE LOD
 - PERMANENT ACCESS LOD
 - OHL LOD
 - PERMANENT BELLMOUTH VISIBILITY SPLAY
 - HIGHWAY BELLMOUTH SSD
 - HIGHWAY BELLMOUTH SSD
 - FRISTON SUBSTATION LOD

Reproduced from Ordnance Survey digital map data © Crown copyright 2024. All rights reserved. Licence number 0100031673.

This drawing has been prepared for the use of AECOM's client. It may not be used, modified, reproduced or relied upon by third parties, except as agreed by AECOM or as required by law. AECOM accepts no responsibility, and denies any liability whatsoever, to any party that uses or relies on this drawing without AECOM's express written consent. Do not scale this document. All measurements must be obtained from the stated dimensions.

ISSUE/REVISION

IR	DATE	DESCRIPTION
A V3	13.02.26	REVISION A (VERSION 3 CHANGE REQUEST)
A V2	14.11.25	REVISION A (VERSION 2 CHANGE REQUEST)
P03	08.01.25	FEATURE AMENDS
P02	19.12.24	SECOND ISSUE
P01	22.11.24	FIRST ISSUE

DRAWING STATUS
ISSUE

PROJECT NUMBER
60664038

SHEET TITLE
TREE PROTECTION PLAN
SUFFOLK SITE
(SHEET 09)

SHEET NUMBER **REV.**
60664038-ACM-XX-SK-AB-TPP-009 A VER 3

National Grid plc
National Grid House,
Warwick Technology Park,
Gallows Hill, Warwick.
CV34 6DA United Kingdom

Registered in England and Wales
No. 4031152
nationalgrid.com